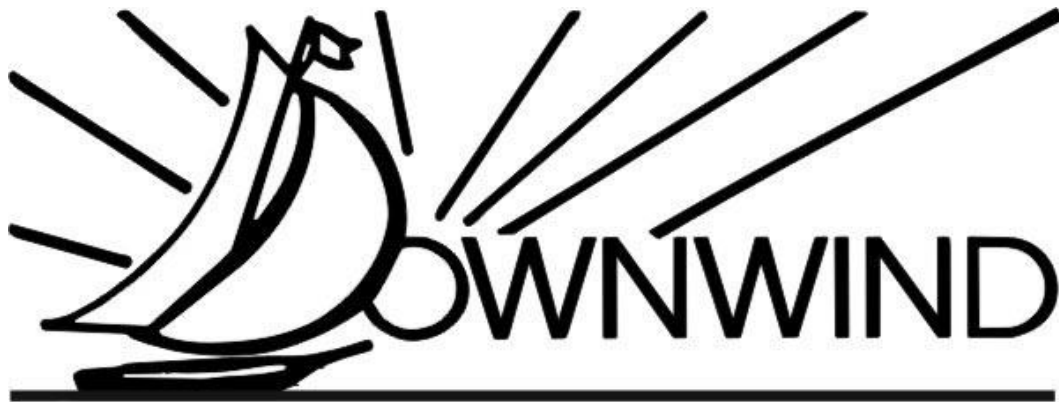




Cruising



32° 43' 21" N 117° 13' 56" W

Sailing Supply / Downwind Marine

Performance Sailing

The Cruiser's Chandlery

2804 Cañon Street, San Diego CA 92106

Telephone: (619) 225-9411

FAX: (619) 225-9414

WEB SITE: <http://www.sandiegomarine.com>

E-MAIL: cruiserinfo@downwindmarine.com

This is a guide to help you plan, provision and prepare for a safe and pleasant voyage. We don't expect you will want or need everything listed here. It is intended only to provoke your thoughts and jog your memory. Also supporting you, the San Diego Marine Exchange family of stores offers more resources and competitive pricing for the boat parts and cruising supplies you may need – and we will serve you worldwide with phone, email, and online-shopping convenience too.

©Copyright Downwind Marine

October 2024

The 2024 Edition of Cruising DOWNWIND is also maintained online at
www.sandiegomarine.com

Please send us any corrections and/or info that will improve this Guide!

Please e-mail your guide corrections to: cruiserinfo@downwindmarine.com

Check for our **UPDATES*** notification in this inside page of our ONLINE guide to announce any major changes made to the dated printing of this Guide (e.g. new maps or other major additions or deletions.)**

At every new printing we also make great effort to correct changes in names of people and places, phone numbers, contact links, etc. however such corrections won't be identified here –too numerous to mention.

Expect to find the most updated version of our online guide to carry the latest corrections we have made – BUT IF you ever find anything that is outdated or incorrect, please let us know! We depend on Cruisers for input!

You can also maintain an updated version of any “hard copy” Downwind Guide yourself by comparing it with our online version full of LIVE LINKS!! – please understand that updating this Guide requires constant time-consuming effort – and still the most recent version will not be totally accurate for long. Most references we offer as links though will hopefully continue to exist and you can keep yourself current by clicking through the links of our online Guide to find the most updated info you need from what is being published more timely by our online references ...then just mark up your old hard copy of this Guide with the valuable updates in information that you can find from those more current references. At least you have an option this way to keep current on Mexico-cruising.

ALSO occasionally Check for the **<Net Schedule Changes Report> placed in this spot here!**

Any updates we make to Net Broadcast Times & Frequencies will be on this page too: These tend to change a bit constantly with the net users as most cruisers have experienced and understand – but usually the change is not a huge variation. Sometimes check-in time will change 15-30 minutes... or sometimes the net moves up or down the band depending on QRM or QRN conditions. Whenever you can't find a specific net running on our posted schedule, ask other cruisers where to find it, or listen for it somewhere within our posted time and/or frequency – it's usually not too far away from where it had been. **HOWEVER** If the change is significant then it needs to be corrected! So again – **Please let us know about any needs for correction!!**

(For more on cruiser-net schedules we maintain see Pages 10 and 15 of this Guide – also open our web site's Links Page and find more worldwide net schedules by scrolling to Marine Communications.)**

Local VHF Net Schedules:

Remember our SD area's **VHF Morning Cruiser Net Schedule** for cruisers' connection: **0830 Mon-Fri CH 68**. Downwind Marine is unable to legally broadcast on VHF and can no longer monitor the VHF net either. We hope cruisers will still use this VHF-forum as needed, especially once you all start gathering during cruising season throughout the Port or nearby bays – So fire up your vessel's radio at 0830 Mon-Fri and check in yourselves to discuss your cruising needs and share information! If your headed for Mexico, then this will be Great Practice!!

NOTE: If changes occur in the above local net schedule, **PLEASE** let us know to help share the new information!

ALSO PLEASE keep sending us updates to VHF Net in Mexican anchorages! Let us know what has changed and we will post your correction on this page of the online version.

Net Broadcasts help keep the boating community together!

Find the Mexican VHF Net Table that cruisers help us maintain on pg. 19 of this Guide.

*****UPDATES** – Find the latest version of Mexico's Quick Guide to Entry Requirements for Private Vessels, published by the Mexican Marina Assn. for the Govt. of Mexico – The New Link to the June 2024 Update is full of useful information and supplied to us from our friends at Marina Coral – AND includes the current **Directory of Mexican Marinas**. NEW! June-2024: [2024 AMMT Brochure - Visiting Mexico by Private Boat](https://ammtac.com/wp-content/uploads/2024/06/BoatingGuide-2024.pdf)
<https://ammtac.com/wp-content/uploads/2024/06/BoatingGuide-2024.pdf>

****LINKS - This Guide is loaded with them to provide current and detailed info - Find these and more in our Downwind Index to Great Online Reference Links for Cruisers at Sailing Resources on the SDMX Website with full web addresses to copy/paste if needed – Locate Sailing Resources under FAQ! ...or use this link:
<https://sandiegomarine.com/faq/sailing-resources/> .**

Find this same indexed list of useful hyperlinks & link addresses in the back pages of this Guide's Appendix!

ALSO - Area Cruiser Nets (i.e. Southbound, Baja and Sonrisa Nets) have been maintaining informative websites! We recommend that you search out these websites and the informative links found on them wherever you are cruising – they're MOST relevant to cruisers in that area and way too much info for us to maintain in San Diego!

New cruising nets & websites we find are listed in the Maritime Mobile/Radio Net List on pg-14 of this Guide. These of course are all subject to change – but when they do just look around and you'll find others!

*This 2024 Cruising Guide is dedicated to the memory of The Weatherman
“Baja Geary” Ritchie*

Table of Contents – 2024 *Cruising* DOWNWIND

Information Description:	Page #:
Useful Contact Information	6
Downwind Marine Services to Cruisers	7
Downwind Marine Cruisers’ Checklist	8-9
Suggested Book List	10
Maritime Radio Nets to Bookmark	10
Mexican Ham Radio Permit Process	11
Chubasco/Manana Net Guidelines	12
SSB Marine Channel Information	12-13
Maritime Mobile/Radio Net List	14-15
Radio FAX Time Schedules and HTTP: Addresses	16
San Diego Bay Mooring and Anchoring	17
Cruisers’ Check-In Process for Ports of Mexico	18-19
Harbor/Services Map of <u>Ensenada, Baja Norte</u>	20
Harbor/Services Map of <u>Cabo San Lucas, Baja Sur</u>	21
Harbor Services Info and Map of <u>La Paz, Baja Sur</u>	22-23
Useful Spanish Directory for the “Gringo Yachtsman”	24-25
Vessel Custody, TIP and Import Information for Mexico	26-27
Sportfishing in Mexican Waters & National Parks Pass	28-29
Online Crew List and Other “Spanish for Cruisers” Info	30
Controlled Drugs in Mexico	30
Appendix	
– Crew List Form (Also see pg. 30 for online download link to e-active version)	
– Suzy’s Zihuatanejo Walking Map (Printed by permission)	
– Suzy’s Playas de Zihuatanejo (Printed by permission)	
– Downwind Index to Great Online Reference Links for Cruisers	
Downwind Marine Contact Info	Front Cover
San Diego Bay Services Map	Back Cover

Cruise in Comfort with
Caframo[®]
MARINE

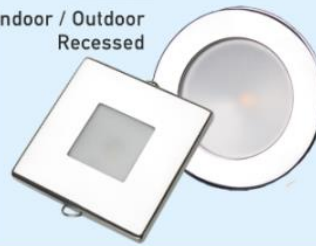
Helping You Relax on the Water



The Worlds Most Advanced Lighting



New
 Indoor / Outdoor
 Recessed



LED Fixtures




ZERO EMISSIONS LED
 Navigation Lights
 Colregs certified

Marine, Recreational, Safety & Speciality Lighting

Boat Insurance - Mexico Boat/Auto Insurance - Wood Boat Insurance



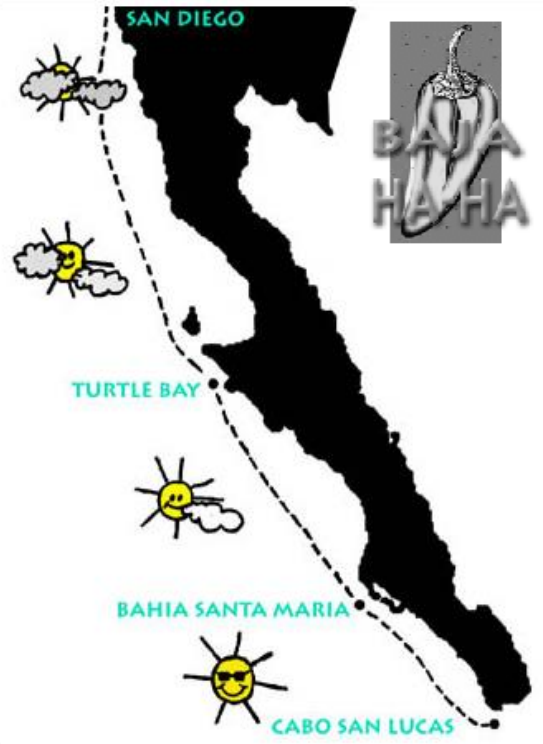
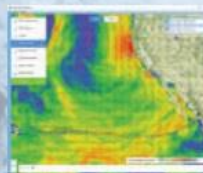
Rowcliffe's Insurance
 PO Box 19971
 San Diego, CA 92159-0971
 619-698-1849
 619-698-1383 fax
 www.rowcliffeinsurance.com
 rowcliffeinsurance@gmail.com
 call...DeAnne Amancio

 SatellitePhoneStore.com | Toll free 1-877-943-6383 | Sales & Support 24/7/365
 We sell, rent, and support the worlds leading fixed and mobile satellite communications.



2830 Shelter Island Drive
 San Diego, CA 92106
 619-627-0327

We have satellite phones and hotspots from every network and can help you
 setup all your devices for email, weather and other data services before
 taking off on your next adventure.



SEVEN SEAS CRUISING ASSOCIATION
 Cruising Knowledge, Cruising Contacts, & Cruising Reality

Member Benefits:

- Monthly Bulletin by Cruisers for Cruisers
- Special Member Discounts & Offers
- Interactive Member Locator Map
- 150+ Cruising Stations Worldwide
- Regional Activities; Social and Educational
- SevenSeasU Online Courses
- Port Guides

and much, much more....

Join SSCA Today!



WWW.SSCA.ORG

Est. 1952





International Health Insurance Solutions
www.healthisinsurance.com

Arno H Chrispeels
 Owner
 Lic.# 0G25078

arno@healthisinternational.com

San Diego, CA
 888.750.1070 toll free
 858.750.9080 usa



Electronics
 designed by
 cruisers for cruisers

www.cruzpro.com



SHEA WESTON
 (619) 225-5690

Offshore Outfitters

MARINE ELECTRICAL AND ELECTRONIC SYSTEMS

2730 SHELTER ISLAND DRIVE • SAN DIEGO, CA 92106
 (619) 523-0072 FAX • (619) 980-6217 CELL
www.offshoreoutfitters.com
sheaw@offshoreoutfitters.com

We are grateful to these special business friends who helped in the printing of this Guide. We join them in wishing cruisers everywhere a safe and wonderful Blue Water Adventure!



Salvador Cabrales
 Operations Manager

+521 (638)112-0204
scabrales@cabralescorp.com
cabralesboatyard.com



Recinto Portuario 91-A, Puerto Peñasco, Sonora 85334




Paradise Village™
 MARINA

**Summer is safe at Paradise
 Enjoy your stay with us!**

011-52-322-226-6728 • www.paradisevillage.com
marina@paradisevillagegroup.com

MEXICAN GOVERNMENT SERVICES

MEXICAN CONSULATE

**1549 India Street
Between Beech & Cedar St.
San Diego, CA 92101
(619) 231-8414
Monday thru Friday – 7AM to 2PM**

Website:

<https://consulmex.sre.gob.mx/sandiego>

Bring all current documents needed for any consulate business, or service will be refused. Since pending renewals of any document may not be honored - we advise that you hold on your consulate visit until you have all renewals in hand. Visa is not needed by U.S. resident for stay less than 180 days with valid passport, however all Canadian, U.S. and certain other foreign nationals must apply for an FMM (Mexican Visitor Permit) at their first port of entry into Mexico OR ONLINE. (See page 18.) Each FMM is issued for a six-month period and requires a passport valid for the entire length of your stay in Mexico.

OTHER USEFUL S.D. CONTACT INFO

San Diego Unified Port Authority
1-619-686-6200 M-F 8AM-5PM
<https://www.portofsandiego.org/> also see:
<https://www.portofsandiego.org/coming-and-going/boating-san-diego-bay>

Report Water Pollution

1-800-424-8802

U.S. Coast Guard Information

1-703-313-5900 (call 24/7)
<http://www.navcen.uscg.gov/>

U.S. Coast Guard Safety Hotline

1-800-323-7233 (National)
1-619-278-7033 (San Diego)
Search & Rescue 24-hrs:
1-619-295-3121 or VHF-CH16

U.S. Customs & Border Protection

<https://www.cbp.gov/travel>
U.S. Customs/Shelter Island - Ag Inspection & Immigration Clearance: 619-843-3206

24-Hr Police Dock - Shelter Island

1-619-686-6272

San Diego Harbor Police Bay Control Guest Dock & Anchorages

<http://reservations.portofsandiego.org/boating>

San Diego Mooring Company

1-619-291-0916

DMV – San Diego

3960 Normal Rd. (Hillcrest Office)
1-800-777-0133

Dona Jenkins

Maritime Document Services
1050 Rosecrans Street
1-619-223-2279 – www.donajenkins.com

Vessel Assist – San Diego

619-223-3575

FUEL OR PUMP-OUT FACILITIES

Harbor Island West Fuel Dock

2040 Harbor Island Drive
Fuel, Pump-out, Oil Change
1-619-291-6443

High Seas Fuel Dock

2540 Shelter Island Drive
Fuel, Pump-out, Oil Change
1-619-523-2980 & VHF-CH80

Pearson’s Chevron Fuel Dock

2435 Shelter Island Drive
Fuel, Pump-out, **ALSO CNG/LPG**
1-619-222-7084

BOAT YARDS AND SERVICE

Driscoll Custom Boatworks

2500 Shelter Island Drive
1-619-226-2500 – www.driscollinc.com

Driscoll Mission Bay Boat Yard

1500 Quivira Way
1-619-221-8456 – www.driscoll-boats.com

Koehler Kraft

2302 Shelter Island Drive
1-619-222-9051 – www.koehlerkraft.com

Marine Group Boat Works

(formerly South Bay Boat Yard)
997 ‘G’ Street, Chula Vista
1-619-427-6767 – www.marinegroupbw.com

(formerly Knight & Carver Yacht

1313 Bay Marina Drive, National City
1-619-336-4141 – www.marinegroupbw.com/

Nielson & Beaumont

2420 Shelter Island Drive
1-619-222-4255 – www.nielsenbeaumont.com

Safe Harbor-Shelter Island Boat Yard

2330 Shelter Island Drive #1
1-619-222-0481 – Monitors VHF 16/68
<https://shmarinas.com/locations/safe-harbor-shelter-island/>

SAN DIEGO HARBOR MOORAGE

See Page 17 for more info on harbor anchoring, moorings and transient slips.

SAN DIEGO HARBOR YACHT CLUBS

(These yacht clubs offer reciprocal slip privilege to members of similar clubs.)

Chula Vista Yacht Club

642 Marina Parkway #83, Chula Vista
1-619-422-7888 – www.cvycc.org

Coronado Cays Yacht Club

30 Caribe Cay Blvd North, Coronado
1-619-429-0133 – www.ccycc.org

Coronado Yacht Club

1631 Strand Way, Coronado
1-619-435-1848 – www.coronadoycc.org

San Diego Yacht Club

1101 Anchorage Lane, San Diego
1-619-221-8400 – www.sdycc.org

Silver Gate Yacht Club

2091 Shelter Island Drive, San Diego
1-619-222-1214 – www.sgyc.org

Southwestern Yacht Club

2702 Qualtrough, San Diego
1-619-222-0438 www.southwesternyc.org

SAN DIEGO HARBOR MARINAS

Bay Club Hotel & Marina

2131 Shelter Island Drive
1-619-224-8888 – www.bayclubhotel.com

Cabrillo Isle Marina

1450 Harbor Island Drive
1-619-297-6222 – www.cabrilloisle.com

California Yacht Marina

640 Marina Parkway, Chula Vista
1-619-422-2595 – www.cymchulavista.com

Chula Vista Marina

550 Marina Parkway
1-619-691-1860- www.chulavistamarina.com

Driscoll Wharf

4918 N. Harbor Drive 1-619-222-4930
www.driscollswarf.com

Driscoll Mission Bay Marina

1500 Quivira Way 1-619-221-8456
www.driscollmissionbay.com

Glorietta Bay Marina

1715 Strand Way, Coronado
1-619-435-5203

Gold Coast Anchorage

2353 Shelter Island Drive
1-619-225-4255

Half Moon Marina

2323 Shelter Island Dr. 1-619-224-3401
www.halfmooninn.com/experience/half-moon-marina

Harbor Island West Marina

2040 Harbor Island Drive
1-619-291-6440- www.harborislandwest.com

Koehler Kraft Marina

2302 Shelter Island Drive
1-619-222-9051 – www.koehlerkraft.com

Kona Kai Marina

1551 Shelter Island Drive
1-619-224-7547 – www.konakaimarina.com

Marriott Marina

333 West Harbor Drive
1-619-230-8955/8957 - www.marriott.com

Marina Cortez

1880 Harbor Island Drive
1-619-291-5985 www.marinacortez.com

Pier 32 Marina

3201 Marina Way, National City
1-619-477-3232 – www.pier32marina.com

Shelter Cove Marina

2240 Shelter Island Drive
1-619-224-2471– www.sheltercovemarina.com

Shelter Island Marina

2071 Shelter Island Dr. 1-619-223-0301
www.islandpalms.com/shelter-island-marina

Sun Harbor Marina

5000 North Harbor Drive #200
1-619-222-1167 – www.sun-harbor.com

Sunroad Resort Marina

955 Harbor Island Drive #100
1-619-574-0736 – <http://sdmarina.com/>

For Visiting Cruisers and others living aboard vessels in San Diego:

The crew at SAILING SUPPLY / DOWNWIND MARINE hopes that you all, locals and visitors, are living comfortably aboard and enjoying your stay in San Diego. Our two stores are ready to help mariners with all their boat-maintenance needs. To further assist the cruising visitors who are preparing for your next passage at sea, we offer the following services during your stay:

- Information on Area Services & Bus Routes
- Fall Cruising Seminars & Events
- Limited Mail/Parcel Collection & Holding* (See below for Temporary Cruiser Mail Service)

*Please note that we have officially ended our long-standing service in mail receiving and forwarding once afforded to all customers who live aboard their vessels. HOWEVER WE STILL OFFER the use of our store's address in a temporary service to our customers aboard transient vessels who need to have a few things mailed to them while they are in town. We also offer to receive and hold your mail and parcels while your vessel remains in town – for a maximum 4-month period. Also note that strict limitations will be observed on all deliveries – please do not send any restricted items to the store which will make us refuse your shipment.

FOR LETTER MAIL: We always appreciate the importance of news from home. However, we have officially discontinued the "cruisers" mail-forwarding service we've historically provided to cruisers. With email and other communication services, this effort is no longer needed to help cruisers keep in touch with family and friends; today cruisers can easily select from multiple services themselves and reach specific places worldwide much faster than hand-delivered mail.

Current terms for Temporary Cruiser Mail Service at Downwind Marine are listed below and specified in a written application available at the store. Anyone who wishes to utilize the service must complete this application and return to the store for approval.

Cruiser Mail Service Agreement and Terms:

- This is a temporary service that we provide to our cruising customers with need for a few things mailed to them while they are in town. Our address CANNOT be used as your official address for DMV, Social Security, Voter's Registration, etc.
- Mail can only be received for person with a signed and approved service agreement within 4 months of this agreement date. Mail received after that date will be refused and returned.
- We WILL NOT accept any deliveries from competitors or of products that our store can provide for you. These shipments may be refused and returned.
- We cannot accept hazardous materials, firearms, medications, or international shipments. These shipments will be refused and returned.
- Please also know that our mail holding is open to the public and works on the honor system. We are not responsible for any lost items. If you need something more secure, we would be happy to provide you with the contact information for a few local mail holding businesses.
- Please have mail sent in the following format:

Your Name
C/O Downwind Marine
2804 Cañon Street
San Diego, CA 92106

FOR PARCELS: Please note that the major shipping companies, (UPS, FedEX, DHL, etc.) provide service in Mexico and will make timely parcel deliveries for you to secure locations you can arrange or to those carriers' multiple service centers in Mexico – many near the larger ports. Standard customs clearance fees will be applied as needed. Use these carriers too for delivery of important documents, like Boat Papers or Passports that you want forwarded to you in Mexico. We also offer to hold such important documents for you temporarily, but only if you arrange with professional shippers to pick-up and deliver them with the safe, priority service that only professional shippers can provide. Our *Downwind* "BAJA EXPRESS" was retired long ago. Procedural changes in Mexican Customs have discouraged most customers once willing to carry packages by boat or car into Mexico, even for other cruisers. Specifically Customs Agents in Mexico require that Duty be paid on any new merchandise (and some old) that is not listed specifically on a vessel's Temporary Import Permit (TIP) of the person carrying it and no one wants to be stuck with the Duty required on products they hold for someone else.

Our customers can also contact the additional shipping brokers we use to ship customer purchases to Mexico – ask for info we can provide. In addition, you'll find that modern marine supply stores and boatyards in most major ports in Mexico now carry a vast selection of products you need for your cruising comfort - and in fact we often supply inventory to many of these stores and boatyards. If they do not stock what you need, just ask them to special order almost any of the products we carry in our stores – have them use our product list at <https://store.sandiegomarine.com/> for reference to over 21,500 items – or have them contact us directly for merchandise you cannot find.

MORE HELPFUL TOURIST INFO Consumer Protection Offices---

**CA State Attorney's Office –
(800) 952-5210**

**San Diego City Attorney's Office –
(619) 533-5500**

**Mexican Consulate General in
San Diego (Weekdays):
(619) 231-8414**

**Consumer Protection in Mexico:
(PROFECO) (weblink)**

<https://www.gob.mx/profeco/en>

**Lee's Pick for Travel Advice:
www.mexperience.com/**

CRUISER GATHERING

SAILING SUPPLY / DOWNWIND MARINE continues to host Buddy Boat Get-Togethers each and every Wednesday morning (10 AM)!

Come meet other cruisers and discuss issues of interest or concern! Learn where other boats are heading and why!

LOCAL VHF RADIO SCHEDULES

San Diego VHF Cruisers' Net
Ch. 68 0830 / Monday-Friday

MARINE SSB NETS – See Page 10

Our store no longer monitors marine radio transmissions, including VHF or HF Marine SSB.

SAILMAIL by RADIO

Check with Shea Weston, Offshore Outfitters (619-225-5690) about the ways to set up your Ham/SSB radios for e-mail while cruising and ensure best contact with family & friends... Plus this will help you email orders to us for more gear!

OUR CREW'S CRUISERS' CHECKLIST

The Crew at Sailing Supply/Downwind Marine provides the following list for best suggestions of gear to stock for passage making. We also recommend that all boats carry both the owner's manual and service manual plus parts list (with part# if available) for all equipment & electronics you routinely use or need onboard.

SAFETY

1. TOP ESSENTIALS: Life Raft sized for entire crew, an EPIRB and a pre-packed "Ditch Bag" to supply life raft in emergency.
2. Automatic Identification System (A.I.S.) installed – use to track commercial vessels' course & speed to avoid collisions.
3. Ham Radio with Marine SSB and Pactor E-mail installed, even if there is no licensed ham operator on board. In emergency HAMS will talk to anyone, for either medical or vessel assistance. Use also to monitor the maritime mobile ham nets for up-to-date news & weather even when there is no satellite coverage. Don't even think of leaving without VHF installed.
4. "Jack-Lines" installed on each side of the length of the boat.
5. Personal Flotation Device (PFD) with Safety Harness for each crew/person on board.
6. Personal Strobes & Whistles on Lanyards for each crew/person on board.
7. Man Overboard Pole with 20-feet of floating line attached to Horseshoe Buoy equipped with Sea Anchor and Man Overboard Strobe.
8. Boarding Ladder or other means to get back on board.
9. Radar Reflector/Detector.
10. Masthead Strobe (Not legal except in an emergency).
11. Flashlight for each area of boat (with extra batteries and bulbs) or battery-less light. LED-type works great here too.
12. Powerful Spotlight or light beam gun.
13. Custom First Aid Kit (to meet personal needs, possible illness and accidental injury) plus Chlorine Bleach to sanitize water.
14. One Rigid Bucket per person (for bucket brigade).
15. Air Horn and Horn Refill Can.
16. Boom Gallows, Boom Crutch, or "Lazy Jacks" to secure boom(s) when not in use, or if /when a topping lift breaks.
17. Lead Line for sounding.
18. Anchors, Chain, & Rode in multiple copies, with extra Shackles, Swivels, Seizing Wire & Chafe Gear, plus Anchor Buoy with line for quick deployment in emergency.
7. Splash Zone or "Poxy-Putty" (both slow cure and fast cure) for underwater repair, plus Bedding Compound (Dolfinite).
8. Spares – Fuses and/or Circuit Breakers.
9. 3M Scotch-Brite Pads for "boatwork", plus Sandpaper (wet/dry), Paint & Varnish, Primer, Thinner, and Brushes.
10. Cleaning Aids like Sponges, Rags, Chamois & Deck Brush.
11. Small Whisk Broom, Dustpan, and/or 12-Volt Vacuum.
12. Canvas Squares for use as collision mat.
13. Plywood (as large as you can stow) for emergency hull and cabin side repair, plus large nails.
14. Wood 2x4's (as large as you can stow) plus Large Hose Clamps for splinting spars and other emergency repair.
15. Assortment of Fasteners – nuts, bolts and screws, etc.
16. Emergency Marine SSB and/or Ham Antenna.
17. Metal Primer & Acid-Etch – keep safely stored.
18. Rubber "True Plugs" and/or Tapered Plugs (wood bungs) with "Stay Afloat" Bee's Wax – keep plugs dry but as handy to thru-hulls as possible.
19. Expanded Inflatable Repair Kit, to include glue, hull fabric, valves, chemicals, etc.

MECHANICAL

Check with your engine maker or its distributor for a list of recommended spare parts to maintain onboard.

Anchoring Note: A proficient anchor system is your best insurance. Have different anchors and anchoring gear on board to be able to leave one or two behind in a hurry and still have enough left to securely anchor again. One monster "Storm Hook" is advisable—but not too big (!) – be able to carry on deck and deploy.

MAINTENANCE & DAMAGE CONTROL

1. Electrical Wire, Solder, Connectors, Tape, etc.
2. Silicone Spray Lubricant (eg. Tri-Flow PTFE, Lanocote) and Engine Starting Fluid.
3. Fin, Mask, Snorkel & good-grip Gloves for in-water hull or prop work (also wet suit & weight belt are really useful here).
4. Spares – Zinc Plates, Collars & Pencils for electrolysis control as needed, including use in cooling system.
5. Fiberglass Material & Tape, plus resin and catalyst.
6. Caulking Gun with tubes of Silicone Caulking & Adhesive (eg. BoatLife, SikaFlex and similar 3M-Products).
1. Spares Kits – for all Pumps on board including Pressure, Hand and Bilge Bumps with extra impellers as applicable.
2. Spares Kit – for Engine Raw Water Pump, all parts plus extra impellers and complete backup pump.
3. Spares – for Stove, include Burner(s) and/or parts for stove.
4. Spares – for Head, all parts plus extra joker valves and packing.
5. Spare Bulbs for running lights and cabin lights, plus a switch or two. Try replacement LED bulbs in your fixtures!
6. Spares – for Oil Lamps, include Chimneys, Wicks, Mantles and Burners, plus extra Paraffin Oil.
7. Batteries for everything using them.
8. Water-Separating Fuel Filter Funnel.
9. Spares – In-Line Water Filter Cartridges & Heater Elements.
10. Fuel Additive(s) for fungus prevention and water absorption.
11. Spares – Fuel injectors/points, plugs, and distributor rotor.
12. Spare Oil Filter Cartridges and OIL, enough oil for at least two oil changes and any anticipated consumption of motor.
13. Spares – Zincs wherever needed.
14. Spares – Hoses and Fan Belts wherever needed.
15. Distilled Water and Salinity Tester to check quality of any distilled water before using in battery.
16. Hydrometer, Battery Filler, and Baking Soda.
17. Hose Clamps plus Assorted Fasteners – nuts, bolts, etc.
18. Volt-Ohmmeter with test leads and alligator clips.

MECHANICAL Continued:

19. Tool Kit – the biggest and best you can afford and fit onboard & also include if possible, a Vacuum Gauge, Prop Puller, Drill Tapping Set, Battery-Operated Drill, & High-Speed Drill Bits.
20. Gasket Material and Adhesives.
21. Spares – for Outboard, including prop, impellers, ignition parts, plugs, etc.
22. Spares – for Auto Pilot, including belt and parts.
23. Spares – Fuel Pump, Battery Switch, and Ignition Switch.
24. Spare Alternator or Generator and/or Brushes and Bearings.
25. Spare Voltage Regulator.
26. Freon Re-charge Kit (find in auto parts store), plus Refrigerator Vacuum Pump, Gauge and Dryer.

RIGGING

Check also with a Rigging Shop for any special concerns.

1. Spares – Blocks, Shackles, Thimbles, Clevis Pins & Cotter Pins/ Rings.
2. Spares – Lines for sheets, halyards and/or Wire Rope.
3. Spares – Piece of Rigging Wire (long as your longest stay).
4. Cable Clamps for every size wire on board.
5. Nicopress Tool and assortment of Nicopress Sleeves.
6. Cable Cutter (capable to cut largest diameter wire on boat).
7. Tape – Rigging Tape, Duct Tape, Chafe Tape.
8. Rigging Knife with Shackler for each crew member.
9. Marlin Spikes and Seizing Wire.
10. Bosun's Chair & Tackle and/or consider a Jumar Ascending Tool.
11. Spares – Winch Handles.
12. Winch Handle Pockets.
13. Downwind Pole(s).
14. Mast Steps or Ratlines for spotting coral if going to South Pacific (also highly recommend Polarized Dark Sun Glasses).
15. Boom Vang - Preventers.
16. Hand-Powered Sewing Machine.

COMFORT

1. Foul Weather Gear and Boots to fit everyone.
2. Hats and Croakies for everyone, with spares as needed.
3. Sunscreen for lips, nose, and skin.
4. Flip-Flops, Tennis Shoes, Heavy Boots & Reef Walkers.
5. Electric Fan(s) & Wind Scoop to fit to your front hatch!
6. Sun Awning – best if it can be left up while sailing.
7. Solar Water Showers.
8. Good Dodger and Weather Cloths.
9. Cockpit Cushions and Cockpit Lantern.
10. Reliable Self-Steering – Wind Vane or Autopilot, or both.
11. Velcro Hatch Insect Netting and Porthole Screens.
12. D-Con Bombs for roaches, Mosquito (& no-see-um) Coils.
13. Flopper Stopper – ocean-swell roll controller.
14. Charcoal or Propane BBQ to cook outside!

15. Laundry Aids like rub board, large tub, plumber's helper, portable wringer and clothespins, plus Tide for saltwater laundry.
16. Saltwater Soap (for dishes, decks, and shampoo) – plus Hair Rinse. (Joy dishwashing soap works great in saltwater!)
17. Insulated "Travel" Mugs and Thermos Bottles – 2 or more.
18. Aluminum Foil Plates for rat guards on lines.
19. Non-skid Matting for lockers, drawers, carpet bottoms, etc.
20. Beach Towels and lightweight, fast-drying Sleeping Bags, Blankets & Pillows.
21. Cookware, Tableware, Cups, Stemware and Kitchen Timer.

MISCELLANEOUS

1. Extra Set of Oars and/or Paddles.
2. Dark Glasses with polarized lenses necessary for spotting coral in South Pacific - and lots of extras too.
3. Jugs for Diesel, Gas and Water as needed – make sure these are well labeled (color-coded) and well secured!
4. Waterproof Document Bag.
5. Backpacks, Heavy Canvas Bags, Sport Bags.
6. Net Bags and Hammocks.
7. Sparker Lighter for stove and Waterproof Matches.
8. Deck Washing Bucket – Rubber or Collapsible Canvas.
9. Funnels to fit everywhere you need.
10. Paper Towels and Toilet Paper.
11. Fishing Gear – Assorted Hooks, Lures, Line & Wire Leader, Shock Cord, Net or Fish Gaff, and Small Bell. Be licensed!!
12. Sharp Knives including 1 large for filleting fish & Filet Board.
13. Machete and Folding Shovel.
14. Boat Hook(s).
15. Shock Cord – in different diameters and lots of it.
16. Tie-Down Line, 1/8" or larger – minimum 250-feet.
17. Heavy-Duty Gloves – minimum 2 pair.
18. Flags – Country Courtesy Flags for each country visited, Quarantine Flag, and one extra "Home Country Flag" (or bag of Nylon in assorted colors to make your own flags).
19. Assorted small gifts for trade, (e.g. dark glasses, printed T-shirts, any clothing from Levi Strauss.) Bring School Supplies for village kids.
20. Folding Shopping Cart.
21. Miner's Head Lamp, 12V Drop Light and/or Lights in Engine Room – Find good LED versions to work here too!
22. Amp (or Amp Hour) Meter on ship's main battery bank, plus Amp Meter for Alternator.
23. Hand-Held VHF radio(s).

AND THE LUXURY ITEMS.....

1. Water Maker – good to have a salinity tester for this too.
2. Portable Generator, Wind/Trolling Generator, and/or Solar Panels.
3. Video or Digital Camera, Blank Tapes and Memory Cards/Sticks, VCR/DVD Player and Video Library.
4. Folding Bicycle(s).
5. Deck Wash-Down Pump.

WE STOCK A FEW BOOKS & DVDs FOR YOU & CREW

For Cruising Mexico and venturing into the West Pacific Basin we suggest the following will be of interest:

- Spanish for Cruisers – by Kathy Parsons (Great help when discussing boat repairs, maintenance, and shopping.)
- Madrigal's Magic Key to Spanish – by Margarita Madrigal (Recommend HIGHLY – find a copy we don't carry anymore!)
- Comprehensive Guide to Marine Medicine – by Eric Weiss, MD & Michael Jacobs, MD
- Advanced First Aid Afloat – by Peter Eastman, MD
- Cruising Cuisine – by Kay Pastorius
- The Cruising Chef Cookbook – by Michael Greenwald
- Mexico Boating Guide – 3rd Edition – by Capt. Pat Rains
- Cruising Ports: The Central American Routes – by Capt. Pat Rains
- MexWX: Mexico Weather for Boaters – by Capt. Pat Rains
- Reed's Maritime Meteorology – by Cornish & Ives
- Modern Marine Weather – by David Burch
- Prairie Chicken Goes to Sea – by Margo Wood
- ALL Editions Charlie's Charts – by Charles (and Margo) Wood & newly revised by Capt. Holly Scott (with Jo Russell)
- Cruiser's Guidebooks: Sea of Cortez & Pacific Mexico – by Heather Bansmer & Shawn Breeding
- Sailmaker's Apprentice – by Emiliano Marino (2001)
- World Cruising Routes – 8th Edition – by Jimmy Cornell (2018)
- NOAA Coast Pilot 7: Pacific Coast (2019)

Check our website at www.sandiegomarine.com for the books we carry online for Cruisers!

Also available are Books for Navigation, Ham Licensing and Code, SSB Installation and Operation, and Chart Guides.

ALSO BOOKMARK THESE WEST COAST MARITIME RADIO NETS

September 2024 – NET INFO ✓ BELOW ARE VERIFIED CURRENT – OTHER NETS REMAIN POTENTIALLY CURRENT – CORRECTIONS WELCOME!

Note: Net warm-up & coordination sessions frequently begin prior to the published net opening time.

More Worldwide Net Schedules are listed on pages 14-15 of this Guide.**

WEST COAST HAM NETS:

**BAJA CA MARITIME SERVICE ✓
(BAJA NET)**

7233.5 kHz - LSB
Daily @ 15:00Z summer/ 16:00Z winter
Weather Daily @ 15:15Z
<https://onthebajanet.com/>

CHUBASCO MARITIME MOBILE ✓

7192 kHz - LSB
Daily @ 14:30-14:45Z summer
Daily @ 15:30-14:45Z winter

SONRISA NET (Sea of Cortez) ✓

3968.0 kHz - LSB
Daily @ 13:30Z summer/ 14:30Z winter
Weather at 14:45Z (13:45Z summer)
Maintained in memory of Geary Ritchie
Net Manger is Robert on Harmony
<https://sonrisanet.tonybishop.org/>

PACIFIC MARITIME MOBILE SVC ✓

2141.2 kHz -USB
Daily from 21:00Z – 24:00Z
<http://www.pmmsn.net/>

PACIFIC SEAFARER'S NET ✓

14300 kHz - LSB
Daily @ 03:00Z
Volunteer Amateur Radio Operators who support yachts and cruisers
<https://pacseanet.blogspot.com/>

PACIFIC MARINE SSB NETS:

AMIGO NET (Retired February 2024)

CALIFORNIA HAWAII NET ✓
1432.0 kHz – USB Daily @ 16:00Z

NORTH SEA OF CORTEZ NET

4051 kHz – 4060 kHz - USB
Daily @ 02:30Z

PAPAGAYO NET ✓

4030 kHz / 4024 kHz – USB
Daily @ 04:30Z

PANAMA PACIFIC NET

8143 kHz – USB Daily @ 14:00Z
Alternative: 8137, 8155 and 6230
Weather Panama to Galapagos

WESTBOUND PACIFIC NET

8104 kHz – USB
Daily @ 16:00Z

SOUTHBOUND EVENING NET ✓

6516 kHz USB
4149 kHz USB (4B)
Daily @ 01:00Z
Weather: 8122 kHz at 0200 UTC
<https://southboundnet.wordpress.com/>

BLUEWATER NET

6516 KHz - USB
Daily @ 02:00Z

PICANTE NET ✓

6212 kHz - USB
Daily @ 13:30Z

MARITIME EMERGENCY NET ✓

USB – Worldwide
14300 kHz (COVERAGE 24/7/365)

**MEXICAN NAVY WORKING
FREQUENCIES:**

4366 kHz, 4419 kHz, 8768 kHz,
8780 kHz

MEXICAN NAVY MONITORS:

8257 kHz
12392 kHz

**NOTE: Keep these links below
HANDY as the following folks
usually maintain comprehensive
lists of current Ham and SSB Nets !!

Dockside Radio:

<https://docksideradio.com/CruisingNets.html>

Find Terry Spark's Net Schedule
at: <https://made-simple-for-cruisers.com/communications-1>

NoonSite-Working for Cruisers:
<https://www.noonsite.com/report/pacific-list-of-radio-nets/>

ATTENTION AMATEUR RADIO OPERATORS

Unlike what is offered already by Canada and the USA in reciprocal ham radio privilege to many countries, **Reciprocal HAM Licensing has been interminally stalled for non-commercial radio operators in Mexico since 2013.** Mexico had seemingly lost interest in continuing its process to automatically recognize non-Mexican amateur radio operator licenses with any type of provisional (reciprocal) "visiting" operator's permit, like the former XE2 Permit.

History: Reciprocal Mexican Ham Radio Licensing had been a service provided by the Mexican government through the SCT (*Secretaria de Comunicaciones y Transportes*) and had been managed by the *Comisión Federal de Telecomunicaciones* ("CoFeTel"), where such permits were only issued by official locations that are authorized by "CoFeTel", generally at the SCT centers in the state capitals, and "CoFeTel" headquarters in Mexico City and many port cities on the Pacific Coast of Mexico with SCT Centers - including La Paz, Mazatlán, Manzanillo, Acapulco, Zihuatenejo. HOWEVER, all this organization became VOID in 2013.

In 2013 "CoFeTel" was revamped as "IfeTel" or "IFT" (Federal Institute of Telecommunications) which became in charge of Mexico's entire telecom-type testing and approval processes for all equipment imported into Mexico. AND THERE had been no priority for IFT to sort out the reciprocal HAM licensing for visitors.

Yet there is a glimmer of hope... a very long time coming... with news actually on two fronts!

FIRST – from Sonrisa.Net at: <https://sonrisanet.tonybishop.org/ham> come news that **It's never been easier to get a HAM license in the USA.** The FCC has authorized fully remote online HAM examinations. You can now sit for your license exam right from your boat in Mexico. Visit hamstudy.org for everything you need to get started.

SECOND – from the QSL.NET HAM operators' website there comes an announcement in a most familiar script:

Mexican (XE) amateur radio permits for foreigners

<http://xe-permit.wd9ewk.net/>



Updated 8 May 2023

Here's the UPDATE! (No news yet on implementation of IFT proposals but check back for anything we can post here as amateur radiomen continue to work out the issues in Mexico.)

On 23 January 2023, the Mexican [*Instituto Federal de Telecomunicaciones*](#) (IFT) announced that it will issue temporary permits for foreign radio amateurs to operate in Mexico, but only on amateur radio satellites. This announcement (in Spanish) appeared in Mexico's *Diario Oficial de la Federacion*, like the *Federal Register* in the USA: https://dof.gob.mx/nota_detalle.php?codigo=5677587&fecha=23/01/2023#gsc.tab=0

This announcement had been proposed to take effect 30 business days after that date. Based on this announcement, it appears that foreign radio amateurs will be able to send requests for these permits to IFT, along with copies of an identity document (like the ID page in a passport) and foreign amateur license. Foreign hams will need to explain when and where they will operate in Mexico, and the equipment that would be used to work the satellites. Permits will be valid for up to 5 years, and foreign hams will use their call sign with a Mexican prefix in front of the call sign.

IFT has recently posted a document explaining the process for issuing permits to use amateur satellites in Mexico. Since it appears the IFT web site blocks access from certain foreign countries, there is [a PDF copy of the new process](#) on the QSL.NET website. It still requires English translation, but at least we all can read (when translated) the process now in effect.

Separate from the issues around Mexico issuing permits to foreign radio amateurs, a senator in the Mexican Congress announced in early March 2023 that he was presenting legislation that would change how Mexican radio amateurs are authorized to operate. Unfortunately, this legislation did not pass out of their Congress, so the current (eventual) licensing process for Mexican HAMS remains in effect. Hopefully it will be filed in a future congressional session and make its way into law.

DISCLAIMER from QSL.NET Manager! I am not a lawyer, nor am I a Mexican national or citizen. This new process may be changed at any time without advance notice. I have no control over any of that. Anyone using this information does so **at their own risk.** [WD9EWK/VA7EWK](#)

You may also want to contact IFT offices: 01-55-5015-4000, in Spanish, or visit the IFT website at www.ift.org.mx and/or search for XE2 Permit news at:

www.ift.org.mx/industria/espectroradioelectrico/telecomunicaciones/2019/licitacion-no-ift-9-servicio-complementario-terrestre-del-servicio-movil-por-satelite.

CHUBASCO/MANANA NET GUIDELINES

Wait until Net Control asks for check-ins. Then, if you have traffic, speak slowly and phonetically. You will be called when it is your turn. Have a frequency in mind where you can meet your other station.

In the following examples the "suffix" should be YOUR Mexican call (if within 12 miles of Mexican territory) or US call (if in International or U.S. waters).

ALWAYS USE YOUR SUFFIX WHEN COMING INTO THE NET. USE YOUR COMPLETE CALL WHEN RECOGNIZED BY THE CONTROLLING STATION. USE ITY PHONETICS FOR YOUR SUFFIX. The suffix is the group of letters within (before/after the number) in your call.

DEFINITIONS

Contact: Used upon hearing a station you need to talk to that is talking to Net Control.

Ex: "**Contact**" suffix of station you want followed by your suffix.

Recheck: You were unable to make/maintain contact with another station leaving net frequency.

Ex: "**Recheck**" suffix.

Short Time: You must leave your radio very soon and need to pass a (some) traffic before leaving.

Ex: suffix "**Short Time**".

Re-Entry: Used when a station returns to the net and It is necessary for another station to know they are back .

Ex: "**Re-Entry**" suffix

Re-Entry With/Without: Reserved for use by Relays and 2-way stations and may also be with/whithout: used when directed by Net Control. This denotes whether the re-entering station does or does not have further traffic.

Ex: "**Re-Entry**" suffix "**With**"

Info: Used to signify that you have information pertaining to the current traffic subject.

Ex: "**Info**" suffix

Check Out: If you have checked into the Net and have traffic pending or another station has reason to expect to be able to contact you, always officially "**Check Out**" with net control when leaving.

List: If you are unable to contact a station on the Net but still want to try again, tell the net control that you want to remain "Listed". You will be periodically given an opportunity to call your station again.

HIGH SEAS SSB MARINE CHANNELS

All Frequencies Upper Side Band Mode

SIMPLEX Ship/Ship-Ship/Shore Channel Designator	SIMPLEX Ship/Ship-Ship/Shore Channel Designator	SIMPLEX Ship/Ship-Ship/Shore Channel Designator
4A 4.146 (kHz)	12E 12.365 (kHz)	22A 22.159 (kHz)
4B 4.149	16A 16.528	22B 22.162
4C 4.417	16B 16.531	22C 22.165
6A 6.224	16C 16.534	22D 22.168
6B 6.227	16D 16.537	22E 22.171
6C 6.230	16E 16.540	25A 25.100
8A 8.294	18A 18.825	25B 25.103
8B 8.297	18B 18.828	25C 25.106
12A 12.353	18C 18.831	25D 25.109
12B 12.356	18D 18.834	25E 25.112
12C 12.359	18E 18.837	25F 25.115
12D 12.362	18F 18.840	

NOTE: These frequencies have been allocated for the exclusive use of the Mobile Maritime Service. The frequencies 4125kHz, 6215kHz, 12290kHz, and 16420kHz are used for calling, as well as distress and safety purposes and the carrier frequency 8291kHz is used exclusively for distress and safety purposes.

The frequencies listed below, may be used for intership simplex (single frequency) and cross band operation.

Appendix 16, Sections C 1 and C 2:

4 MHz: 4000, 4003, 4006, 4009, 4012, 4015, 4018, 4021, 4024, 4027, 4030, 4033, 4036, 4039, 4042, 4045, 4048, 4051, 4054, 4057, and 4060.

8 MHz: 8101, 8104, 8107, 8110, 8113, 8116, 8119, 8122, 8125, 8128, 8131, 8134, 8137, 8140, 8143, 8146, 8149, 8152, 8155, 8156, 8161, 8164, 8167, 8170, 8173, 8176, 8179, 8182, 8185, 8188, and 8191.

Comment: Note that the frequencies 4417kHz (4 Charlie) and 6516kHz (6 Delta), which are often used by ship stations for simplex intership transmissions and the 6215z Caribbean Net, have been specifically allocated solely to Coast Stations under Appendix IC-Section A - Table of Single-Sideband Transmitting Frequencies for Duplex Operation under the new Band Plan.

WWV & WWVH – Time Ticks and Adverse Weather Conditions			CH	SHIP TX	SHIP RX	CALL	CH	SHIP TX	SHIP RX	CALL
WWV	5,000	(10 min. after each hour for N. Pacific east of 140W.)	850	8291	(Freq. KHz) SIMPLEXSHIP		2208	22021	(Freq. KHz) 22717	
Fort Collins	10,000		851	8294	Distress – Band HF8		2209	22024	22720	
	15,000		852	8297	SIMPLEX SHIP		2211	22030	22725	
							2212	22033	22729	
WWVH	5,000	(48, 49, and 50 min. after each hour for Hi. No. & So. Pacific.)	1204	12239	13086		2213	22036	22732	
	10,000		1205	12242	13089	U.S.C.G.*	2217	22048	22744	
	15,000		1207	12248	13095		2218	22051	22747	
			1212	12263	13110	WLO	2219	22054	22750	
			1213	12266	13113		2220	22057	22753	
			1214	12269	13116		2221	22060	22758	
			1216	12275	13122		2224	22069	22765	
			1217	12278	13125		2225	22072	22768	
			1218	12281	13128		2226	22075	22771	
			1219	12284	13131		2227	22078	22774	WLO
			1220	12287	13134		2228	22081	22780	
402	4068	4360	1221	12290	13137		2230	22087	22783	
405	4077	4369	1222	12293	13140		2231	22090	22786	WLO
406	4080	4372	1224	12299	13146		2232	22093	22789	
407	4083	4375	1225	12302	13149		2233	22096	22792	
408	4086	4378	1226	12305	13152	WLO	2234	22099	22795	
409	4089	4381	1227	12308	13155		2235	22102	22798	
413	4101	4393	1227	12308	13155		2237	22108	22804	WLO
414	4104	4396	1231	12320	13167		2238	22111	22807	
415	4107	4399	1232	12323	13170		2239	22114	22810	
418	4116	4408	1250	12290	SIMPLEX SHIP		2240	22117	22813	
419	4119	4411			Distress – Band HF12		2251	22159	SIMPLEX	
420	4122	4414	1251	12353	SIMPLEX SHIP		2252	22162	SIMPLEX	
421	4125	Distress - Band HF4	1252	12356	SIMPLEX SHIP		2253	22165	SIMPLEX	
424	4134	4426	1253	12359	SIMPLEX SHIP		2252	22168	SIMPLEX	
425	4137	4429		12362	SIMPLEX SHIP		2255	22171	SIMPLEX	
426	4140	4432	1604	16369	17251					
450	4149	SIMPLEX SHIP	1606	16375	17257					
		Distress	1607	16378	17260	WLO				
451	4146	SIMPLEX SHIP	1608	16381	17263					
452	4149	SIMPLEX SHIP	1609	16384	17266					
453	4417	SIMPLEX SHIP	1612	16393	17275					
			1613	16396	17278					
601	6200	6501	1614	16399	17281					
602	6203	6504	1615	16402	17284					
603	6206	6507	1617	16408	17290					
604	6209	6510	1618	16411	17293					
605	6212	6513	1619	16414	17296					
606	6215	6516	(1621	16420	17302)					
607	6519		1650	16420	SIMPLEX SHIP					
650	6215	SIMPLEX SHIP			Distress – Band HF16					
		Distress - Band HF6	1622	16423	17305					
651	6224	SIMPLEX SHIP	1623	16426	17308					
652	6227	SIMPLEX SHIP	1625	16432	17314	U.S.C.G.*				
653	6230	SIMPLEX SHIP	1627	16438	17320					
654	6516	SIMPLEX SHIP	1628	16441	17323					
			1629	16444	17326					
801	8195	8719	1630	16447	17329					
803	8201	8731	1632	16453	17335					
806	8210	8734	1633	16456	17338					
807	8213	8737	1634	16459	17341					
812	872	8752	1635	16462	17344					
813	8731	875S	1636	16485	17347					
816	8240	8764	1637	16465	17350					
817	8243	8767	1638	16471	17353					
818	8246	8770	1639	16474	17356					
819	8249	8773	1640	16477	17359					
820	8752	8776	1641	16480	17362	WLO				
821	8255	8779	1651	16528	SIMPLEX SHIP					
823	8261	8785	1652	16531	SIMPLEX SHIP					
824	8264	8788	1653	16534	SIMPLEX SHIP					
827	8273	8797	2202	22003	22699					
828	8276	8800	2203	22006	22702					
829	8279	8803	2204	22009	22705					
830	8282	8806	2206	22015	22711					
832	8288	8812	2207	22018	22714					

NOTE:
 *USCG Working Channels
 WLO – Ship to Shore Contact via Big "A" antenna in Mobile, Alabama

Other Ship Services Ship Tx & Rx:

2065	Ship/Coast
2079	Ship/Coast
2082.5	Intership Safety and Ops Com
2093	Ship/Commercial Fishing
2095.5	Ship/Coast
2142	Ship: Pacific S. of 42' N DAY ONLY
2182	Distress, Safety & Calling (no longer USCG-monitored.
2203	Ship: Gulf of Mexico
2638	Ship
2670	Ship / U.S.C.G.
2738	Ship
2830	Ship: Gulf of Mexico
3023	Search & Rescue, Inc.
5680	Search & Rescue, Inc.

USCG maintains 24/7 distress radio guards on the following Radiotelephone Frequencies:

- 2.142 MHz (Pacific Coast south of Lat 42N)
- 2.182 MHz (USCG Watch Discontinued)
- 4.125 MHz 400-800 miles
- 6.215 MHz 600-1,200 miles
- 8.291 MHz 800-1,600 miles
- 12.290 MHz 1,200-2,400 miles
- 16.420 MHz 1,600-3,200 mile

For Updates on Marine SSB Simplex Channels:
<https://docksideradio.com/SimplexChannels.html>

MARITIME MOBILE/RADIO NET LIST

Time (UTC)	Freq. (MHz)	Net Name	Days	Coverage	Details	Contact/Web (Some Update Needed!)
0000/0100+	3.968 - 7.282?	HAPPY HOUR NET	Dly	Baja, WMex.	MM.Soc.	XE2/WP2F
0000	14.320	SEA MM Net	Dly	S/Pac, W/Pac	SEA MM	
0025	14.323	MOBILE MAR SE ASIA	Dly	HongKong to Aus	MM, WX at 0055	
0100	6.516	SOUTHBOUND NET	Dly	W/C, Baja	MM, Soc	
0100	.925	Gulf Coast Hurricane Net	Dly	G/C USA	WX. TFC	WD5CRR
0100+	3.855	BC BOATER'S NET	Dly	Sts. Of St.George.	Summer MM	http://www.bcbn.ca/
0100>0300+	14.305	Cal.-Haw. Cocktail Hr.	Dly	Cal/Haw/Pac	MM OK	KH6DEH
0200/0100+	21.492	GERRI'S HAPPY HOUR M/M	M-F	Pac/Baja	MM/Social	K7YDO
0200	14.334	Brazil/East Coast Net	Dly	E/C Atl.	WX. TFC	K3UWJ
0200	3.932	Great Lakes Emerg. Ifc	Dly	G/L	WX. TFC	WD8ROK
0200>0400+	14.300 -14.313	PACIFIC SEAFARER'S NET	Dly	PAC, W/C	MM	https://pacseanet.blogspot.com/
0300+	14.116	Traveler's Net	Dly	Aust,W/Pac-I/OTFC	MM	VK6BO
0330/0230+	7.294	Sandia Net	Dly	W/C, Baja	Soc/Trivia	KA6HFG
0400+	3.856	Taco Net	Dly	Baja	Social	
0400+	14.115	CANADIAN DDD NET	Dly	PAC	W/U 0330	VE7JY
0400+	14.318	ARNOLD'S NET	Dly	S/Pac	MM, WX	ZK1DB
0430	14.118	Le Reseau Du Capitaine Net	Dly	ATL, CAR, PAC	MM, WX	
0500/0400+	14.313	PAC MARITIME NET	Dly	PAC	W/U	KH6UY
0500	21.200	UK/NZ/AFRICAN NET	Dly	PAC, I/O	MM	VK3PA
0500	8.101/12.353	Radio "Peri-Peri"	Dly	East Africa	WX at 8.101	
0530/0430+	14.313	PACIFIC MARITIME NET	Dly	PAC	MM, R/C	http://www.pmmsn.net/
0630+	14.316/7.045	SO AFRICAN MAR NET	Dly	S/ATL, S.AFR, I/O	MM	ZS5GC
0630	14.313	INTERNATIONAL MM NET	Dly	ATL, MED, CAR	also 1700	DK0MC
0700>0800+	7.085	MED SEA CRUISER'S Net	Dly	MED SEA	MM	
0715+	3.820	BAY OF ISLANDS NET	Dly	NZ, Aus, PAC	MM	ZL1BKD
0800>0830+	14.315	Pacific Inter-Island Net	Dly	S/PAC, W/PACTFC		KX6OU
0800+	14.303	UK MARITIME NET	Dly	MED, PAC	also 1800	G4FRN
0900	14.313	MED SEA MM NET	Dly	MED	MM	5B4MM
1000	14.313	German MM Net	Dly	ATL, MED	MM	DK0MC
1000+	14.320	South China Sea Net	Dly	S/PAC		
1030	3.815	Caribbean WX Net	Dly	CAR	WX also 2230	VP2AYL
1100/1000+	3.770	Mar Provinces WX Net	Mon-Sat	NE Canada	WX	VE1AAC
1100>1200+	7.241	CARIBBEAN MM NET	Dly	CAR	MM	KV4JC
1100>1600+	14.300 / 14.313	Intercon Net (MM)	Dly	N/S/C/Am	TFC/MM	http://www.14300.net/
1100+	14.283	Carribus Traffic Net	Dly	E/C, CAR	TFC	KA2CPA
1110	3.930	Puerto Rico WX Net	Dly	PR/VI	WX also 2310	KP4AET
1115+	14.316 / 14.341	INDIAN OCEAN MAR NET	Dly	W/PAC, I/O		VK6HH
1130+	14.316 / 7.045	SO AFRICAN MAR NET	Dly	S/ATL, I/O	MM	ZS5MU
1130	21.325	So Atlantic Roundtable	Dly	S/ATL	TFC also 2330	PY1ZAK
1200+	28.380	MARITIME MOBILE NET	Dly		Novice OK	
1200+	14.320	So/East Asia Net	Dly	SEA, S/PAC		WB8JDR
1200>1400+	7.233	E/C WATERWAY NET	Dly	E/US	RV TFC	KB1Z
1220+	7.096	Bahamas WX Net	Dly	Bah/Fla	WX, MM	C6AGG
1230	7.185	Barbados Info Net	Dly	CAR	TFC	BP6DH
1245/1145+	7.268	E/C WATERWAY NET	Dly	E/C, CAR	MM	NU4P
1245	14.1225	MISSISSAUGA MM NET	Dly	E/MED, ATL,CAR	VE Relay, MM	VE3NBL
1300>1400+	21.400	TRANS ATL MM NET	Dly	N/ATL, CAR	R/C, WX	BP6OM
1300>1400+	3.963	E/C Recreational Vehicle Net	Dly	E/C US	TV TFC	KB1Z
1300+	7.085	C/A BREAKFAST CLUB	Dly	C/A	MM Social	TI7MEG
1330+	6.212	PICANTE NET	Dly	W. Mex		
1330+	3.968	SONRISA NET	Dly	Baja, So Cal	MM, WX	sonrisanet.tonybishop.org/
1400	8.143	Panama Pacific Net	Dly	Panama-Galapagos	MM, WX	
1400	4.126	AMIGO NET -Retired Feb2024	Dly	Baja, So Cal	MM	
1400>1600+	7.263/8	Rocky Mountain RV Net	Dly	Mid West	RV TFC	K5DGZ
1445 (1530 Winter)	7.192	CHUBASCO NET	Dly	Baja, So Cal	MM	XE2/N6OAH
1500	8.101/12.353	Radio "Peri-Peri"	Dly	East Africa	WX at 8.101	
1500+/1600	7.2335 / 7.238	BAJA CAL MAR NET (Baja Net)	Dly	Baja, So Cal	WX-1515Z	www.bajanet.com/
1600+	7.200/268	Taco Net	Dly	Baja	Social	
1600>0200+	14.300 -14.313	MAR MOBILE SERV NET	Dly	ATL, CAR, PAC		mmsn.org/
1600>1800+	7.263/8	PAC RV Service Net	M-F	W/US	RV TFC	K6BYP
1630/1530+	3.865	PT. LUDLOW BOATER'S NET	Dly	Wash	MM, WX, R/C	WO7O
1630	14.303	SWEDISH MAR NET	Dly		MM 0530, 2030	
1630	14.313	GERMAN MAR NET	Dly	Worldwide	MM	intermar-ev.de/
1700>1800+	14.308	RV Service Net	Dly	US	RV TFC	KB1Z
1700+	14.323	US/Canada Power Sqdn.Net	Sat	US/Canada	Boat TFC	W7LOE

Please contact us with any discrepancies you find OR additions we need to maintain this list for cruisers.

Time (UTC)	Freq. (MHz)	Net Name	Days	Coverage	Details	Contact
1700+	7.240	Bejuka Net	M-F	C/A	TFC	HP3XWB
1700	14.313	INTERNATIONAL MM NET	Daily	ATL/MED	MM also 0630	DK0SS
1700>1900+	14.280	Inter-Mission RA Net	M-Sa	C/A, S/A, CAR	TFC	WA2KUX
1700	14.118	Le Reseau Du Capitaine Net	Daily	ATL, CAR, PAC	MM (WX AT 0430)	
1800	28.313	10 -METER M/M NET	Daily	E/PAC-Haw.	Novice OK	N6URW
1800+	14.303	UK MARITIME NET	Daily	ATL/MED	MM also 0800	G4FRN
1800+	14.283	KAFFEE KALTCH UN-NET	MW/Sa	HAW/Tahiti	Social, news	FO5GZ
1800+	7.076	SO PAC CRUISING NET	Daily	S/PAC	MM, WX, informal	
1830/1730+	14.340	MANANA NET - WARM UP	M-Sa	W/C, E/PAC	MM	KB5HA
1900/1800+	14.340	MANANA NET	M-Sa	W/C, E/PAC	MM	
1900/1800	14.305	Confusion Net	M-F	PAC, ATL	TFC	W7GYR
1900+	7.285	Hawaii AM Net	Daily	Hawaii	TFC, WX	KH6BF
1900>2000+	21.390	Halo Net	Daily	N/A, S/A	TFC	WA4FXR
1900+	14.329	BAY OF ISLANDS NET	Daily	NZ, S/PAC	MM	ZL1BKD
1900/2000	14.297	ITALIAN MM NET (Ital/English)	Daily	ATL (AFRICA-BRAZIL)	WX	IK6JF
2000+	7.080	NEW ZEALAND WX NET	Daily	NZ	WX, MM	ZL1BTQ
2000>2200+	21.390	Inter-American Traffic Net	Daily	N/A, C/A, S/A	TFC	WD4AHY
2030	14.303	SWEDISH MAR NET	Daily	ATL	MM 0530, 1630	
2030+	14.315	TONY'S NET WARM UP	Daily	NZ, AUS, S/PAC	MM, W/U	ZL1ATE
2100+	14.261	Ben's Friends MM Un-Net		E/C	MM Social	K3BC
2100+	14.315	TONY'S NET	Daily	NZ, AUS, S/PAC	WX-VK9JA	ZL1ATE
2100+	14.113	MICKEY MOUSE CONNECT.	Daily	S/ATL, S/PAC	MM	CX9ABE
2200>2230+	3.963	E/C Recreational Vehicle Net	Daily	E/C, US	RV also 1300	KB1Z
2200+	21.402	PACIFIC MARITIME NET -15m	M-F	PAC, C/A, BAJA	MM	KB7DHQ
2200+	21.412	MARITIME MOBILE SVC NET	M-F	PAC/Worldwide	MM	KA6GWZ
2230	3.815	Caribbean WX Net		CAR	WX also 1030	VP2AYL
2310	3.930	Puerto Rico WX Net	Daily	P/R, V/I	WX also 1110	KP4AET
2330	21.325	South Atlantic Roundtable		S/ATL	TFC, social	
365/24/7 All Year	14.300-343	MARITIME EMERGENCY NET	Daily			http://www.14300.net/
AS NEEDED	14.325	Hurricane Net	A/R	ATL, CAR, PAC	Hur. Track	K0IND

LEGEND:

ATL = Atlantic, **CAR** = Caribbean, **C/A** = Central America, **EC** = East Coast, **E/Pac** = East Pacific, **G/C** = Gulf Coast, **I/O** = Indian Ocean, **MED** = Mediterranean, **MM** = Maritime Mobile, **R/C** = Roll-Call passage maker positions taken, **TFC** = Traffic, **W/C** = West Coast, **W/Pac** = West Pacific, **W/U** = Warm Up session check-ins, **WX** = Weather, **"**"** = No current INFO information, may be outdated, **"+"** = Net INFO checked recently, **">"** = Net operates from/to times listed, **"I"** = Net time changes from/to for daylight savings or summer to winter.

Footnotes:

1. Credits: **Many thanks to Dockside Radio, Val Ellis and the dozens of people, both cruisers and base stations, who have provided this information.** Cruisers "out there" and dedicated base stations are often the only source of updated information. All updates are appreciated. Thanks also to those hard-working Net Managers, Net Controls, and Relay/ Two-way Stations. Cruisers appreciate all your efforts! Please contact **Downwind Marine** with any changes or additions to this list: 619-225-9411 or email cruiserinfo@downwindmarine.com.

2. Amateur Nets:

MM Nets above are shown in capital letters. Other nets listed above provide information or services useful to cruising hams. MM Nets are active nearly worldwide 24 hours a day, between 14.300 - 14.320MHz.

Traffic Nets in the U.S. include many state and regional Traffic Nets that exist on 75 and 40 meters, normally above 3.900MHz on 75 and 7.225MHz on 40. Most are active in the early evening. Cruisers may find them useful for phone patches and message traffic.

VHF/2 Meter Nets are run in popular cruising grounds and often provide check-ins, WX and sometimes wide area linked systems. The B.C., Straits of Georgia, system has several repeaters linked together covering the entire straits area. It runs daily MM Nets in the late afternoons during the summer months. The Chesapeake Bay 2 Meter Net provides check-ins and WX during the summer months.

3. Operators are **strongly** cautioned to check appropriate band allocations, operator privileges, reciprocal licensing agreements, third party traffic agreements, and net protocols **before transmitting**.

4. Note that Net broadcasts often vary over time and frequency, based upon conditions and QRM. If nets are not found when or where listed, listen around plus or minus any listed frequency/time. Downwind's Quick List also provided on [page 10](#) of this Guide.

5. Marine Band Nets: **Marine VHF Nets** are frequently run in popular cruising areas, eg. Cruisers Net in La Paz, Baja, MX on Ch 22.

6. Marine HF Nets are often run for regional areas. Popular examples include:

Keri Keri Net (New Zealand), Western S PAC on 2480/ 4417/ 4445 KHz, WX at 1925/2000L, Position Reports taken at 0800/1900L.

Caribbean SSB Net on 6.215 MHz at 1200/2300Z, Herb's WX Net (Southbound II) on 12A, 12.353 MHz at 1900/2400Z for E/C and CAR passage makers (also on 6A), VNN555 Net (NSW Australia, by VK4NN), 2000Z, ITU Channel #608/6221T/6522R, #1234/12329T/ 13176R, #1642/16483T/17365R.

Also informal nets are often held during popular passage making times. Examples include the 8A, 8.294 or 12B, 12.356 MHz nets for boaters heading south from San Diego to Baja and vice versa. WX information is often provided. Any updates or additions to the Marine Band Net List are always welcome - email cruiserinfo@downwindmarine.com.

7. Information: Photocopying of this MM Net List for free distribution is authorized, provided credit is given, and the list is published including the legend and all footnotes. Entering the list into a computer database or any other use requires written permission.

WORLDWIDE MARINE RADIOFACSIMILE BROADCAST SCHEDULES – Oct 2024

Locate updates and transmission contents for worldwide schedules at

<https://www.weather.gov/media/marine/rfax.pdf>

Selected Radio Stations of the North America – Detailed Transmissions listed on each station page:

PT. REYES, CALIFORNIA, U.S.A.

<https://www.weather.gov/images/marine/PLBZ01.gif> (Part 1)

<https://www.weather.gov/images/marine/PLBZ02.gif> (Part 2)

CALL SIGN	FREQUENCIES	TIMES	EMISSION	POWER
NMC	4346 kHz	0140-1608	J3C	4 KW
	8682 kHz	All Broadcast Times	J3C	4 KW
	12786 kHz	All Broadcast Times	J3C	4 KW
	17151.2 kHz	All Broadcast Times	J3C	4 KW
	22527 kHz	1840-2356	J3C	4 KW

NMC Coast Guard San Francisco (Pt. Reyes), North Pacific Radiofax Charts – www.weather.gov/marine/ptreyes

NEW ORLEANS, LOUISIANA, U.S.A. <https://www.weather.gov/images/marine/PLEZ01.gif>

CALL SIGN	FREQUENCIES	TIMES	EMISSION	POWER
NMG	4317.9 kHz	All Broadcast Times	J3C	4 KW
	8503.9 kHz	All Broadcast Times	J3C	4 KW
	12789.9 kHz	All Broadcast Times	J3C	4 KW
	17146.4 kHz	1200-2045	J3C	4 KW

NMG Coast Guard New Orleans, Gulf of Mexico & Baja California Radiofax Charts – www.weather.gov/marine/gulf

HONOLULU, HAWAII, U.S.A.

<https://www.weather.gov/images/marine/PLBZ07.gif> (Part 1)

<https://www.weather.gov/images/marine/PLBZ09.gif> (Part 2)

CALL SIGN	FREQUENCIES	TIMES	EMISSION	POWER
KVM70	9982.5 kHz	0519-1556	J3C	4 KW
	11090 kHz	All Broadcast Times	J3C	4 KW
	16135 kHz	1719-0356	J3C	4 KW

KVM-70 DOD Honolulu, Central & South Pacific Radiofax Charts – www.weather.gov/marine/hawaii

Additional Pacific Basin Radio FAX Schedules:

CHARLEVILLE, AUSTRALIA

CALL SIGN	FREQUENCIES	TIMES	EMISSION	POWER
VMC	2628 kHz	0900-1900	J3C	1 KW
VMC	5100 kHz	All Broadcast Times	J3C	1 KW
VMC	11030 kHz	All Broadcast Times	J3C	1 KW
VMC	13920 kHz	All Broadcast Times	J3C	1 KW
VMC	20469 kHz	1900-0900	J3C	1 KW

WILUNA, AUSTRALIA

CALL SIGN	FREQUENCIES	TIMES	EMISSION	POWER
VMW	5755 kHz	1100-2100	J3C	1 KW
VMW	7535 kHz	All Broadcast Times	J3C	1 KW
VMW	10555 kHz	All Broadcast Times	J3C	1 KW
VMW	15615 kHz	All Broadcast Times	J3C	1 KW
VMW	18060 kHz	2100-1100	J3C	1 KW

VMC/VMW-High Seas Asia, Indian Ocean, S Pacific AU Radiofax Charts –

<http://www.bom.gov.au/marine/radio-sat/radio-fax-schedule.shtml>

WELLINGTON, NEW ZEALAND

CALL SIGN	FREQUENCIES	TIMES	EMISSION	POWER
ZKLF	3247.4 kHz	0945-1700	J3C	5 KW
	5807 kHz	All Broadcast Times	J3C	5 KW
	9459 kHz	All Broadcast Times	J3C	5 KW
	13550.5 kHz	All Broadcast Times	J3C	5 KW
	16340.1 kHz	2145-0500	J3C	5 KW

ZKLF-Tasman Sea, SW Pacific AU Radiofax Charts – <https://www.metservice.com/marine/radio-schedule>

San Diego Bay Mooring and Anchoring Information

PERMITS FOR DESIGNATED ANCHORAGES AND TRANSIENT VESSEL SLIPS

Mooring ball rentals in 4 locations throughout SD Bay can accommodate vessels from 19'-54' with six able to moor 65'. All are managed by San Diego Mooring Co. Inquire at: <https://www.sandiegomooring.com/> Phone: (619) 291-0916

Anchoring in San Diego Bay is by permit only in designated anchorages for 72-hour periods and must be obtained at least one day in advance – no exceptions. Permits require valid ID and vessel registration and most permits are issued without fee online by the San Diego Unified Port District or from the Harbor Police Mooring Office during regular business hours from 0800 –1600 hours Monday-Friday. (Closed weekends and holidays, and every other Friday.)

Owners/operators of all vessels with permits are responsible for all applicable state laws and local ordinances, in addition to any environmental concerns. All boats must have holding tanks or port-a-potties.

For Online Permits, Rules & ALL Reservations: <http://reservations.portofsandiego.org/boating/> or call (619) 686-6227.

These designated anchorages are marked on SD Bay Services map on back of this guide with the following descriptions:

A1 - (LA PLAYA COVE) - La Playa Cove is a **72-hour over weekend-only** anchorage located between San Diego and Southwestern Yacht Clubs in the Shelter Island Yacht Basin and is marked by yellow buoys. The hours of anchoring are from 0900 hours on Friday through 0900 hours on Monday. **In case of a weekend holiday, anchoring is permitted for 96 hours.** If the holiday falls on a Friday, anchoring is permitted from 0900 hours on Thursday through 0900 hours on Monday. If the holiday falls on a Monday, anchoring is permitted from 0900 hours on Friday through 0900 hours on Tuesday. A maximum of twenty-five (25) boats are allowed in the cove. (Up to 40 vessels can be accommodated with raft-ups of up to 10 boats.) All boats must have a holding tank.

A5 - (GLORIETTA BAY) - The A5 anchorage is situated in Glorietta Bay, south of the Coronado Golf Course, and is marked by yellow buoys. Anchorage is open 7 days a week, with anchoring up to **72-hours only**. The hours for anchoring begin and end at 0900 hours. There is a minimum of one calendar day between issuance of A5 permits and no more than three 72-hour anchoring permits may be issued to any person or boat in any 30-day period. This area accommodates fifteen (15) vessels, and up to twenty (20) vessels within raft-ups. All boats must have a holding tank.

Please note that the **A8 - SOUTH BAY ANCHORAGE** is no longer in operation!

Anchoring permits for A1 and A5 may be obtained online or phone as shown above. Requests for anchoring permits may be submitted up to 30 days in advance, but no less than one day in advance. No more than three 72-hour anchoring permits may be issued to any person or boat in any 30-day period. The three permits may be issued at A1 or A5, or both cumulatively.

A9 - (CRUISER ANCHORAGE) - The A9 anchorage is situated in an area adjacent to the United States Coast Guard Air Station at the east tip of Harbor Island and is marked by yellow buoys. This anchorage is available to non-residents of San Diego County only whose boats are not registered in San Diego County either. **Permits for this anchorage must be obtained in person at 1401 Shelter Island Drive and proof of non-residency must be provided.** Permit here also requires boat inspection by the Harbor Police Bay Control Officer. You may dock at the Harbor Police/Customs Check-in Dock and notify the HPD Dispatch at 619-686-6272 that you are on the dock and requesting an A-9 vessel inspection and permit. A copy of the permit must be kept aboard vessel as proof of issuance.

All vessels obtaining a permit for this anchorage are restricted to a 90-day period within any 365-day period. All vessels obtaining a permit must renew their permit every 30 days without exception. The Cruisers Anchorage is marked by three large yellow can buoys that warn of the restricted water space toward the Coast Guard Air Station to the east. A red channel buoy showing the entrance to the Harbor Island lagoon marks the West End. This anchorage is available for up to twenty (20) vessels. All boats must have a holding tank.

TRANSIENT DOCK – 26 slips for vessels up to 65-foot LOA are available at the Port of San Diego Guest Dock located at the Harbor Police Sub-Station (at the south end of Shelter Island - 1401 Shelter Island Dr.) for a maximum rental of 15 days in any 40-day period per vessel/person. Reservations and slip permits are available online via the Port's Website and can be made up to 14 days in advance. Payment is required when making reservation. All major credit/debit cards accepted. Check-in time is 1300 hours and check-out time is 1100 hours.

Services available at each slip include potable water and 30-amp shore power connections, plus guests have access to pump-out stations, dock carts, restrooms and showers. Vessels are charged \$1.37 per linear foot length per day based on USCG or DMV boat registration. Use of these slips requires current boat registration/documentation with owner and/or operator identification. Make online reservations for slip assignment on first come first serve basis - use the SD Port [reservations](http://reservations.portofsandiego.org/boating/index.asp) website or tie up at the Police/Customs dock at the facility and contact the Harbor Police Mooring Office during regular business hours at the phone kiosk provided at dockside or online at: <https://reservations.portofsandiego.org/boating/index.asp>

Also see Page 6 of this Guide for our list of marinas to contact for price and availability.

CHECKING IN & OUT OF MEXICO BY BOAT – GET ONLINE FMM!

Americans visitors descend on Mexico in great numbers – for business, recreation, health and family affairs. Mexico must continually prepare for American visitors and foreign visitors too from the entire world. With the experiences of COVID, plus their own need for social and economic development they continually evolve in their responsibility to Visitor Entry into Mexico – with their major focus in visitor compliance for Health, Immigration, Customs and Port Authority.

Americans still do NOT need a “visa” to visit Mexico, however, today as visitors beyond the border towns, each must have a visitor entry permit that legally allows for a single entry up to 180 days. This entry permit is called FMM (Forma Migratoria Multiple or Multiple Migratory Form) and is issued mainly to Americans and Canadians, who fall under the category FMM (Visitante Sin Permiso para Realizar Actividades Remuneradas) or FMM Visitor without permission to undertake remunerative activities. FMM is issued to US/Canadian tourists, whether arriving by car, boat or plane (your airline/cruise-ship ticket price to any Mexican destination will also include this FMM fee for you to be in Mexico legally.) If arriving by private boat, the application for and pre-payment of the FMM can now be performed online, using the following link to the appropriate section of the Mexican Immigration web page: <https://www.gob.mx/inm/acciones-y-programas/ven-a-mexico-practica-pesca-deportiva-y-disfruta-del-turismo-nautico/> and select the line within that page that takes you to the FMM application and payment page, ...or use this link: <https://www.inm.gob.mx/spublic/portal/inmex.html>.

Pre-payment of the FMM visitor form was initially intended to get the immigration payment from the U.S. sport-fishing fleet from San Diego that entered Mexican waters to fish and did not land at any Mexican port. This was expanded to include the private yachts and sailboats entering Mexico with the intent to make the clearance into Mexico ports easier, and truthfully, even faster. The Mexican government recommends that everyone pre-pay online, but it is not mandatory to do so prior to arrival at a Mexican port, especially if you plan to arrive in Ensenada to clear-in as you enter Mexico from the north. Yet consider using the Banjército website to pre-pay this fee, it's simple to navigate and allows users to make the current \$687 MXP peso/person payment with a credit card. (Sept 2023 USD conversion with current exchange rate of 0.057: \$687 MXP = \$40 USD.) You are half-way to securing your FMM when you hold the paid receipt of the FMM fee.

However it's 2024 and the process for Visitor Entry into Mexico keeps evolving to something usually better from than what has worked well in the past.

Immigration Requirements One Can Process Yourself Prior to Arrival in Mexico by Private Boat – 4 Steps

For direct explanation of the current Immigration check-in process, review pg.4 on Mexico's immigration requirements in this link to the 2024 [AMMT Visitors' Brochure](#). Here you will also read that upon your arrival at first port of entry, will meet with Health and Immigration agents, who will examine your passport and reasons for visiting Mexico. Upon landing, the process is to first visit the **Immigration Office (Migración)**, or a marina with immigration services, and present a valid passport (with green card if applicable) for every person aboard and make application of the FMM with payment of the Immigration Fee (\$638 pesos/person) or show the pre-payment receipt(s) for FMM to cover the Immigration Fee owed. See, every individual on board still needs to pay the FMM fee and you can pay upon arrival ... but if already paid for some or all crew, then show the paid receipt(s) for those who have paid. The major change this year is that upon verifying your paid FMM fees, you will NOT be given a paper FMM! Instead your passport will now be stamped by an agent with authority to grant your Approved Entry into Mexico... as is done worldwide when one is approved to enter a foreign country... It is now your Passport stamp that validates your entry into Mexico.

On another note, the 4 steps for immigration that you find in the brochure will still need to be completed online by all whose vessel only takes them into Mexican waters for fishing, diving, or whale watching, etc.; i.e. those who are NOT intending to make ANY landing into Mexico during their travel in Mexican waters. For such entry into Mexican waters the immigration process is called Maritime FMM. (**For more on legal entry ONLY into Mexican waters – for fishing and offshore water activities see page 29.**)

Back to arrival at your first port of entry,

Here are the steps to follow to clear into any port in Mexico. Be aware that ports all run somewhat independently of each other, often with different priorities, but all basically providing you their best service. Health inspection may occur at Migración or the Port Captain's office – wherever it happens, the inspection will focus on any health concerns facing the port you enter. For now COVID assessment has backed off, and there is currently no critical health advisory for travel to Mexico. It is always helpful for persons to carry their personal vaccination cards when traveling to foreign ports, and vaccination cards are often checked in Mexico; currently vaccination check is not mandatory in Mexican ports, however such check can be at the discretion of the Port Captain who is responsible for the welfare of the port. Some ports might still check for fever, but at present it's usually not mandatory. Make it your discretion to determine your own best health protection, check the CDC website for its vaccine and other recommendations, before and during your travels in Mexico at: <https://wwwnc.cdc.gov/travel/destinations/traveler/none/mexico>.

Note here that the Port of Ensenada is highly recommended for a cruisers' entry in southbound travel to Mexico. Your FMM clearance here then allows you to stop along the Baja coast, (which you officially cannot do until you First check-in with Migración somewhere!)

The next entry with immigration services after Ensenada is Cabo San Lucas! Sometimes lucky folks will visit Isla Cedros when there is sometimes an immigration official on hand for check-in, but by reports this courtesy is generally made ready for commercial vessels only and is not always extended to private yachts. If you're turned down here, then you must go back to Ensenada or proceed directly to Cabo without stopping anywhere.

Another clearance form for arrival by sea is the "Crew List for Spanish Speaking Countries", or **Despacho**, the official crew manifest (see page 30). Visiting vessels must complete such form and have at least four copies when checking into port with the other documentation. The crew manifest is for the travel periods when the boat is at sea. The names on this list must match up with the persons on board. When the boat is in port the Crew List serves only to show that the boat is legally checked into the port. The people named on the Despacho do not need to be on the boat while in port (but crew touring off boat must possess valid documents and FMM.) Crew manifests must be kept current. It helps to have blank crew manifests in reserve if you expect to make crew changes. Usually each Despacho will eventually have 2 sets of stamps, the one applied when the boat leaves a port and one put on when the boat enters the next port. Although currently Mexican protocol provides that cruisers need only check into their first port-of-call and check out of their last port-of-call in Mexico; actually that provision only holds true if there is no change in the Crew List. If crew changes are made at any port you visit, you must make out a new Crew List to reflect the change and have it approved by Migración and the Port Captain (Capitania del Puerto) because your boat is accountable for where crew have gone or what crew has been added (with their FMM clearance) before your boat can leave that port. For such documentation during your cruise of Mexican Ports, keep one copy of each Crew List and any port entry and fee receipts in an accessible file, with most recent documents on top. Another recommendation is to have passport copies of each crew member and copies of plane tickets, etc. that show the travel plans of any crew that leaves your boat, and especially document where, when and how many of your boat's crew officially leaves Mexico.

Upon entry you first visit Migración and then the Port Captain (Capitania) to review and sign your boat documents and pay the port "clear-in" fee usually related to your vessel's size/weight, and then back to Migración to drop off a copy of Crew List signed by the Port Captain. The port "clear-in" fee is only charged upon first entry into Mexico and can be paid by credit card. Without credit card for this fee, protocol directs cruisers to fill out a form to take to the bank (Banjército) and return with the form stamped by bank as proof of payment. You must also contact **Aduana (Customs Office)** upon Port entry for vessel inspection to determine if anything aboard is NOT allowed in Mexico or requires duty payment to be allowed. Visit [Mexican Customs TO HELP IDENTIFY items that are routinely prohibited for cruising visitors to bring into Mexico, AND types and quantity of personal items that will be duty-free.](#)

Other required documents are boat registration with proof of ownership of the vessel or proof to identify who is legally authorized by the owner to function as captain of the vessel. A Temporary Import Permit (TIP) should also be obtained online before arrival in Mexico or at your first port of entry, contact the Customs Office (Aduana) no matter how long you intend to stay in Mexico. This document does not change vessel registry; it establishes the vessel's ownership within Mexican waters and allows your vessel to stay in Mexico legally for up to 10 years and not be impounded. A TIP is obtained with a one-time fee @\$50.00 USD and is not issued in all ports, as it requires a special Banjército CIITEV office for processing. Port cities of Baja CA with such office include Ensenada and the ferry terminal at Pichilingue (La Paz). **(For more details on TIP see page 26).**

Port offices are all closed on weekends and holidays. If you arrive at this time and your crew must leave the boat before you can clear Migración, make sure you have a copy of their FMM and their plane ticket available for officials to inspect so there is no question that such person(s) were a part of your crew. Many registered marinas can clear boats in and out of port for their clients, providing better hours of service to cruisers during the marina's longer working day. This service applies only for entry to and from ports within Mexico or internationally by way of a Registered Ships Agent. Check with each port on any further regulations for such clearance as it varies. Although port clearance is no longer required when traveling from port to port after your first entry into Mexico, it is highly recommended that you hail the Port Captain by VHF or visit the office as a courtesy upon arrival in any new port and inquire what contact with that port's office might be required. The safety of all port visitors is the top priority for this port agent. Find contact info for Port Authorities in link to **Directory of Port Captains** below.

Link: [Directory of Port Captains:](#)

Open this Complete Directory filled with information on the ports and port captains of all coastal regions of Mexico. Here you will find Shortcut-Links provided to contact the regional Port Authorities, including those found in the "Peaceful" West Coast of Mexico.

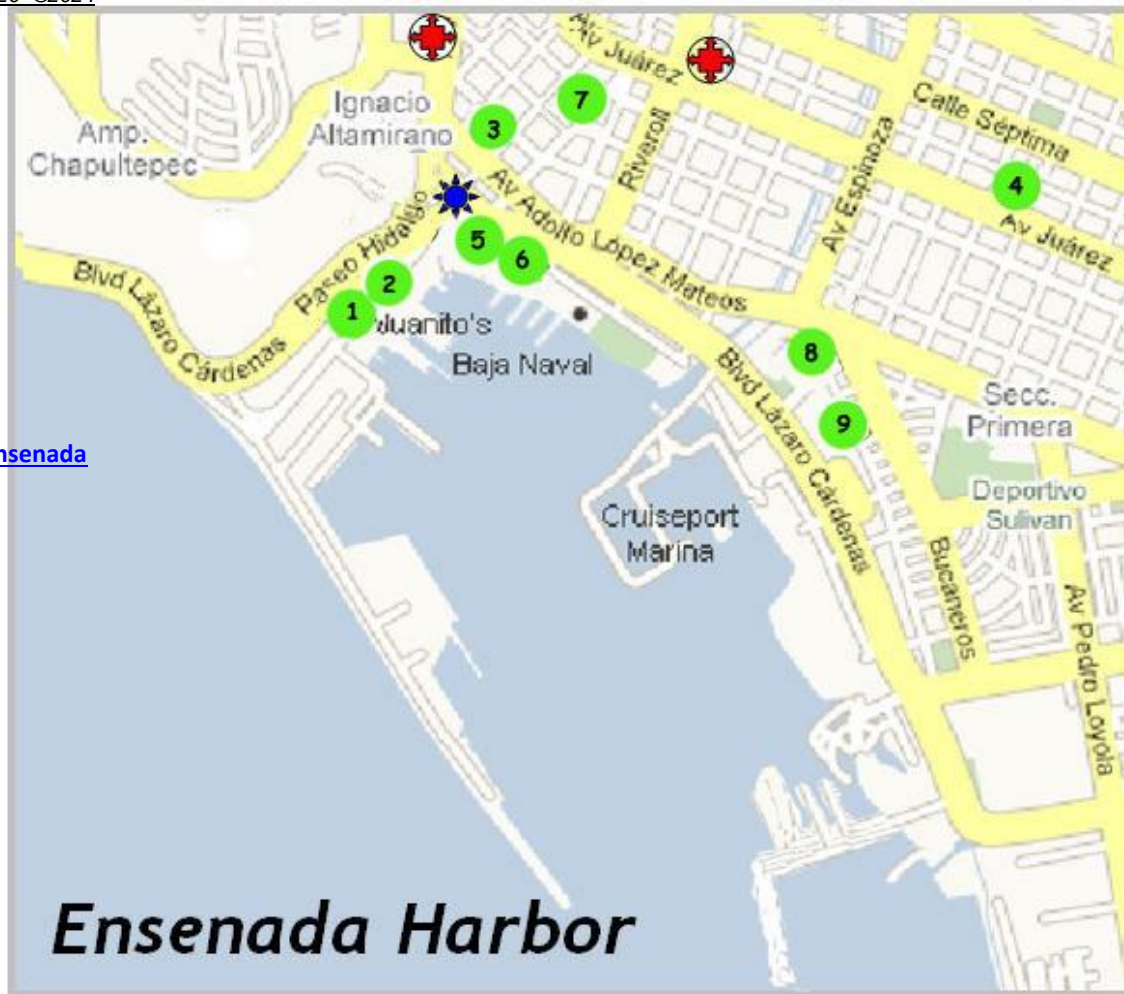
VHF Net Schedule Table for Cruiser Anchorages in Mexico:

Current Cruiser VHF Net Schedule - Local Harbor Areas in Mexico				
Harbor/Bay	VHF Channel	Local Time	Occurrence	Comment
Ensenada, BC	69	At 0800	Mon-Sat	
WX - Bahía Concepción, BCS	22	At 0800	Mon-Sat	
Puerto Escondido, BCS	22	At 0800		
La Paz, BCS	22	At 0800	Mon-Sat	
Cabo San Lucas, BCS				
San Carlos & Guaymas, Sonora	74	At 0800	7 Days/Weekly	
Puerto Peñasco, Sonora				
Mazatlán, Sinaloa	72	At 0800	In Summer: M, W, F, Sat	In High Season: Daily, except Sunday
Banderas Bay, Nayarit	22	At 0830	Mon-Sat	
Tenacatita, Jalisco	22	0915 or 0945	Mon-Sat	Follows Barra
Barra de Navidad, Jalisco				
Costa Alegre, Jalisco & Santiago, Colima	22	0900 or 0930	Mon-Sat	Start Time depends on SSB input
Zihuatanejo, Guerrero	22	At 0800	Mon-Sat	

These Cruiser Net Schedules run consistently for local traffic during "high" cruising season. Table under construction – Cruisers please help us ADD info as needed and KEEP Updated! THX to all!

For more accurate viewing of the area, use this

[Google Map Link to Ensenada](#)



Ensenada Harbor

Ensenada Harbor is undergoing slow but steady changes. Regulations governing harbor pollution are in effect. The Malecon is completed. The cruise-ship wharf is amazing. **Anchoring is prohibited in the harbor**, but there are three full-service marinas here. Most marinas offer port and customs clearance services with many other amenities. Cruisers (& members of the 90-DayYacht Club) are advised to reserve a slip before arrival here.

Ensenada Port Authority Weblink - <http://www.puertoensenada.com.mx/engi/0000001/home>

2024 Update - Short List of Ensenada Contacts:

Baja Naval – Boatyard & Marina – VHF: CH. 77

Full service boatyard with 75-Ton Travel Lift
50-slip marina with slips to 100-ft – Wireless internet
Phone: 011-52 (646)174-0020

Email: marina@bajanaaval.com - boatyard@bajanaaval.com

Website: <http://www.bajanaaval.com/>

Hotel Coral & Marina (North of Harbor) – VHF: CH. 71

Gas & Diesel dock - 350-slip marina with slips to 150-ft
Phone: 011-52 (646)175-0000 or in US 1-(800)862-9020
Dock Master: Arnulfo “Fito” Espinoza R.

Email: fito.espinoza@hotelcoral.com

Website: <http://www.hotelcoral.com>

Cruiseport Village Marina – VHF: CH. 12

One of the newest facilities, with 198-slips to 68-ft
Phone: 011-52 (646)173-4141

Email: reservations@ecpvmarina.com

Website: <http://www.baja-web.com/ensenada/marina/>

- 1 Port Captain–Immigration–Customs
- 2 Banjercito
- 3 Soriana – Super Mercado
- 4 Hardware Store – Tornillos Alvarado
- 5 Tourist Information
- 6 Fish Market
- 7 Calimax – Super Mercado
- 8 Correos de Mexico – Post Office
- 9 Centro Social y Cultural



Pemex Gas Station



Bank – Banomex or Bancomer

Ensenada continues to offer great shopping for Mexican wares – with pharmacies, bars, restaurants, liquor stores & more within blocks of harbor.

Local VHF Net – Mon-Fri at 0800 CH69



Cabo San Lucas

Baja California Sur
Mexico

NOTE: All info on people and places named in this Guide will change with time. Please help us maintain these pages for cruisers with helpful and accurate information. We rely very much on cruisers to contact us with corrections or additions! --Thanks from Downwind!

2024 Update - Short List of Cabo Contacts:

Marina Cabo San Lucas
380-slip World Class Marina/Vessels to 375-ft
Phone: 011-52 (624)173-9140
FAX: 011-52 (624)143-1253
VHF: CH 88A
Website: <http://www.igy-cabosanlucas.com/>

Agencia Barreda
Experienced - reliable Victor Barreda and family serve as document agents for foreign cruisers. Located at the foot of the Pedregal.
Phone: 011-52 (624)143-0207 / Cell: (624)147-5019
FAX: 011-52 (624)143-0002
Website: <http://barredaagency.com/>
VHF: CH 12 Email: operations@caboportagent.com

Cabo Yacht Center
Boatyard with 70-ton Travel Lift & Marine Store
Phone: 011-52 (624)143-3020 (in US: 619-819-8779)
FAX: 011-52 (624)142-9711
Website: <http://www.caboyachtcenter.net/>

As Legacy, we post this kind letter from Neil Shroyer sent to Chris Frost and Downwind Marine in the mid-1980s to showcase the huge effort made then by the **Marina de La Paz** to encourage and support the cruisers visiting La Paz – the gateway to the Sea of Cortez. Reports are that not everything stated in this old letter remains entirely accurate, but this outstanding marina continues to stand as a beacon of welcome to all cruisers, along with an amazing waterfront town. Today even more cruiser services are available in La Paz, MX – Visit La Paz by boat!



Malcolm E. Shroyer ditto Check 28

Topete 3040 y Legaspy
La Paz, 23000 BCS México
Apdo. Postal 290
Website: <http://www.marinelapaz.com/>

Tel: 011 52 612 122 1646 or 125 2112
Fax: 011 52 612 125 5900
E-Mail: marinelapaz@prodigy.net.mx

LA PAZ

La Paz is definitely the cruising center of the Sea of Cortez and deserves its good reputation. Among other things, the town is business oriented versus tourist oriented; almost all serious boat repair work can be performed here and access to parts from the states is above average; postal service is more reliable than in other parts of Mexico; and best of all, the drinking water is clean.

La Paz now has several full-service marinas. **Marina de La Paz** is located near the front of town and has 110 slips, protected by a breakwater, with water and electricity (110/30 amp or 220/50 amp), water, and **free Wi-Fi internet and Ethernet connections** at each dock. The fuel dock sells diesel only. **Anchor-outs have the use of a dinghy dock, and on the premises are a chandlery, laundromat, restaurant, dive service, yacht maintenance service, FAX, public phones, public VHF radio, and the clubhouse for the Club Cruceros de Le Paz with mail drop, book exchange, and message board.**

The larger **Marina Palmira** is about 3 miles from the center of town and the new Costa Baja is located at the beginning of the entry channel to La Paz. **Marina Don Jose** has a few slips next to Marina de La Paz and **Marina El Palmar** has more slips a little further to the south.

The inner bay of La Paz is now dotted with moorings, from the basin in front of town to the area in front of what is commonly known as Hotel Gran Baja and more are available in the channel next to El Mogote peninsula. Also Marina Santa Cruz, towards the town side of MLP has more.

La Paz also has five boatyards capable of hauling boats up to 120 feet.

Finally, discover the **La Paz' LOCAL NET (La Paz VHF Cruiser's Net): Mon-Sat 0800 on CH22.** for the yachtsman's answer to the yellow pages, 911, and National Enquirer all in one easy-to-use package. Don't miss it.

DOWNWIND CRUISING EDITOR'S NOTE: Please check the "Links" Section of our website at <https://sandiegomarine.com/faq/sailing-resources/> for the continual additions of interesting places we keep finding on the web for La Paz and Baja Sur. Read the postings about people & activities in music, fine arts & sail events you might want to follow! Let us know if there are other events and places we need to post too! Send Links!

Also discover the Links of Interest from **Marina de La Paz** at <https://www.marinelapaz.com/links-of-interest/>.



Today find even more marinas in La Paz, plus cruiser services and supplies... many are listed in the comprehensive community directory of the **La Paz Cruiser's Guide**, brought to you by **Club Cruceros** – along with this helpful and explicit map image shown here called **La Paz Anchoring Areas!**

Locate this excellent reference map ONLINE and in large format for best viewing of the information – **La Paz Anchoring Areas** – Found on pages 24-25 of the link: https://www.clubcruceros.net/Cruiser_Guide.pdf
Courtesy of Club Cruceros

Anchoring in La Paz is a privilege that could be revoked. The Navy does not want to have to police our fleet and could easily close the anchorage to all.

Anchoring Areas are Numbered in Pink

1. City Waterfront - Watch the depth here.
2. The Mogote - Be careful to only cross over the sandbar at the connecting channel.
3. The Sandbar - Anchor between the two channels on either side of the sandbar.
4. Boatyards & Navy Base - Do not crowd this area. Often wrecks are brought into the boat yards with limited maneuverability. Keep clear of the Navy Base to allow for ship and emergency search and rescue vessels.

No Anchor Zones are in Blue

NO Anchoring outside the entrance to the Boatyards and Marina.

NO Anchoring in the large area in front of the Navy Base.

NO Anchoring in any of the Navigational Channels.

Submerged Vessels are the White Symbols & Letters

Don't put your ground tackle tangled up on a submerged vessel.

- a. TABASCO # Southwest of the dock on the Mogote approximately 50 meters off the beach.
- b. BEYOND Approximately 50 meters off the fisherman's cross on the east end of the Mogote.
- c. SEASCOPE Approximately 75 meters south of BEYOND.
- d. OLD STEAM WRECK (The sweet pipe is just above water but who knows for how long)

Information provided by Club Cruceros

For more accurate viewing of this area, use this [Google Map Link to La Paz](#).

La Paz Harbor Baja CA Sur, Mexico

- 1 - Port Captain
- 2 - Immigration
- 3 - Customs - Aduana
- 4 - SCT
- 5 - Tourist Information
- 6 - Correrias de Mexico (Post Office)
- 7 - Super Mercado
- 8 - La Paz Cruisers Supply, Ross Marine & Tech Mex Services
- 9 - Allende Books
- 10 - Club Cruceros
- 11 - Ferre Mar de La Paz (Marine Store)
- 12 - Anthro Museo
- 13 - Wal-Mart



To Pichilingue, Costa Baja & Tecolote Beach

To Aeropuerto Internacional
Manual Marques de Leon

Pemex Station
Bank or ATM

Marina Fonatur & La Paz Boat Ramp

SPANISH

For The Gringo Yachtsman

Compiled by Dix Brow, Kay Boylen, and Chris Caswell

We've all seen it: the American tourist trying to ask for something in the non-English-speaking shop. The face gets redder, the voice gets louder, and the charade of descriptive gestures gets more convoluted. Compound that problem by making the American into a yachtsman trying to buy a shackle (el shacklo?) and the result is often total frustration.

For the benefit of SEA readers who venture below the border, we've put together a basic list of boating terms that probably won't be found in your average English Spanish dictionary. We haven't included the more common words, so be sure you take the basic dictionary with you. One point to remember: language is a tenuous thing and varies from one area to the next. What a North American calls a boom vang is a kicking strap to an Englishman. So if our word draws a blank when you use it, don't blame us. If all else fails, try the last phrase on this list. It should get action.

Sailing

Sloop.....	El Balandro
Yawl.....	La Yola
Ketch.....	El Queche
Schooner.....	La Goleta
Sail.....	La Vela
Genoa Jib	El Genoves
Jib.....	El Foque
Mainsail.....	La Mayor
Mizzen.....	La Mesana
To Reef.....	Rizar
Reef Points.....	Los puntos de tomar prizo
Spinnaker.....	El Balon

Rigging

Chainplate.....	El endenote
Stay.....	El Estay
Forestay.....	Estay de proa
Backstay.....	La Burda
Shackle.....	El Grillete
Halyard.....	La Driza
Block.....	El Moton
Sheet.....	La Escota

Engine Terms

Spark plug.....	La Bujia
Belt.....	El Cinturon
Hose.....	La Manguera
Pump.....	La Bomba
Starter.....	El Arranquedor
Points.....	Los Platos

Spars

Boom.....	La Botavara
Bowspirit.....	El Baupres
Gooseneck.....	El Zuncho de la botavara
Mast.....	El Palo
Spinnaker Pole.....	El Tangon del balon

Anchors

Anchor.....	El Ancla
Anchor chain.....	La Cadena del ancla
Anchor line.....	La Cuerda del ancla
Capstan.....	El Cabrestante
Sea Anchor.....	El Ancla flotan

Hull

Anti-fouling paint.....	La Pintura anti-incrustante
Beam.....	El Pantoque
Bulkhead.....	El Mamparo
Cabin.....	El Camarote
Cockpit.....	La Banera
Companionway.....	La Escotilla
Deck.....	La Cubierta
Draft.....	El Calado
Centerboard.....	La Orza
Bow.....	La Proa
Stern.....	La Popa
Frame.....	La Cuaderna
Hand rail.....	La Barandilla
Keel.....	La Quilla
Hull.....	La Brusca
Rudder.....	El Timon
Outboard motor.....	El Motor fuera de borda

Deck Gear

Cleat.....	La Abrazadera
Life lines.....	Los Guardamancebos
Stanchion.....	El Candelero
Steering Wheel.....	El Volante
Tiller.....	La Cana
Winch.....	El Torno

Accommodations

Bunk.....	La litera
Forecastle.....	El castillo
Head.....	El vater
Mahogany.....	La caoba
Oak.....	El roble
Teak.....	La teca
Spruce.....	El abeto de Canada

Terms Underway

Ahead.....	Avante por la proa
Astern.....	Atrás por la popa
Amidships.....	El Medio del barco
Closehauled.....	Barloventado
Jibe.....	Trasluchar
In irons.....	Proa encantada
Leeward.....	A sotavento
On the bow.....	Por la amura
On the quarter.....	Por la aleta
Reaching.....	Descuartar
To reef.....	Rizar (Tomar rizos)
Running.....	Viento en popa
To tack.....	Virar
Watch.....	La Guardia
Windward.....	A Barlovento

Phrases Underway

Turn left (right).....	Doble a la izquierda (derecha)
Straight ahead.....	Direto de frente
Stop!.....	¡Para! (¡Alto!)
Faster (slower).....	Más rápido (más despacho)
Can you tow us?.....	¿Puede remolcarnos?

Navigation Terms

A fix.....	Una Situación
A sight.....	Una Observación
Compass.....	La Brújula (El Compas)
Dead reckoning.....	La Situación de estima
Dividers.....	Los Compases de puntas
Hand bearing compass.....	El Aguja acimutal de mano
Lead line.....	El Escandallo
Offshore.....	Alta mar
On shore.....	En la orilla (En la costa)
Parallels.....	Las Reglas paralelas
Sextant.....	El Sextante
Depth sounder.....	El Sondador mecánico
Speedometer.....	El Velocímetro
High tide.....	La Marea alto
Low tide.....	La Marea baja

Miscellaneous

Oars.....	Los Remos
Oarlocks.....	Las Chumaceras
Dinghy.....	La Ponga
Life preservers.....	Las Salvavidas
Binoculars.....	Los Binoculares (Los Prismáticos)
Flashlight.....	El Foco de mano
Deep.....	Muy hondo
Not deep.....	Poco hondo
Dock.....	El Muelle
Knot (in rope).....	El Nudo

Fishing Terms

Rod.....	La Caña (de pesca)
Reel.....	El Carrete
Line.....	La Piola (Linea)
More drag.....	Más freno
Leader.....	El Empate
Swivel.....	El Destorcador
Hook.....	El Anzuelo
Gaff (n.).....	El Gancho
Gaff (v.).....	Enganchalar
Bait.....	La Carnada
Lure.....	La Señuelo
Fishing chair.....	La Silla de pesca
Troll.....	Troleo
Fish following.....	La Pez viene
Reeling in.....	Esta jalando
Birds working.....	Pajaros trabajando
Tangled.....	Enredado
Strike!.....	¡Huelga!
A jump.....	El Salto
Slack.....	Floja
Coming up.....	El Sube
Bad hookup.....	Mal anzuelado
Too bad.....	¡Que lastima!
Turtle.....	La Caguama
Shrimp.....	El Camaron
Lobster.....	La Langosta
Whale.....	La Ballena
Shark.....	El Tiburon
Marlin.....	El Marlin
Sailfish.....	La Pez Vela
Dolphin.....	El Dorodo
Yellowtail.....	El Jurel
Porpoise.....	La Tonina
Grouper.....	La Garropa
Rock bass.....	La Cabrilla
Skipjack tuna.....	El Barillete
Crab.....	El Cangrejo

When All Else Fails...

Shape Up or Ship Out!.....Desarrollate bien o Embarcate!
(Also more plainly spoken as.....En vereda o fuera!)

We also recommend Kathy Parsons' book [Spanish for Cruisers](#) to provide valuable Spanish boat terms and phrases for concise, accurate communication whenever needed... and check out her website as well at www.spanishforcruisers.com/.

Our Best Recommendation for your visit and for
FULL ENJOYMENT of Mexico is this:
Practice your Spanish!

Mexico's Temporary Import Permit & Application

IMPORTATION OF FOREIGN VEHICLE OR VESSEL

Over the long history that Americans have enjoyed traveling in Mexico, there has been much transition in procedure for their vehicles and yachts to stay in Mexico for any length of time. Once foreign boat owners could leave custody of a boat to a person or marina in Mexico, but this introduced much risk for both owner and Mexican persons or marinas. For several years now Mexico's federal government has recognized the need to regulate both foreign road vehicles and vessels of travelers through its Customs regulation known as **TIP - Temporary Import Permit**. This permit has served well to provide assurance to foreign visitors who remain compliant in TIP regulations for multiple entry of their vehicles and/or vessels into Mexico, as well as offer them some exemption in import duty on specialized parts and materials needed to repair and maintain these vehicles and vessels. Vehicle and vessel TIP may be obtained through [Banjercito's online TIP Process](#) at a Banjercito office at the border or at certain Mexican Consulates (listed below). Banjercito (Mexico's Banco Nacional del Ejército Fuerza Aérea y Armada) is the government authority who issues TIP permits. To find contact information for a specific Banjercito office, download [Banjercito's Directory](#) from [gob.mx](#).... and don't forget your Mexican insurance policy for boat and/or car!

Regarding road vehicles, whether a foreign visitor enters Mexico on a tourist visa (180-days or less) or on a Temporary/Permanent Resident visa (more than 180-days), most visitors will need to apply for a Temporary Importation Permit for any vehicle they want to bring to Mexico. Currently a one-time fee of **\$1,069.58MXP** per vehicle, (or @\$53.65 USD) is charged upon completion of the application for this permit, either online or in person in Mexico upon port or border entry. However note that the road vehicles for tourists visiting 180-days or less are treated in two different categories of travel, and in one category there is NO requirement for TIP... or need to pay the refundable cash deposit (currently \$200-\$400) that the visitor can recover from Customs upon exiting Mexico with the vehicle and before the expiration of the visitor's 180-day entry permit:

- Vehicle TIP permits and refundable \$\$ are NOT required to drive the entire Baja peninsula or to Rocky Point.
- Vehicle TIP permits and refundable \$\$ *are* NOT required within the border zones (which is generally less than 16 miles from the border) or within the permit-free zones of Sonora.
- Looking for a Sonora Only permit? Read *ExPat Forum's* article: [Sonora Only Vehicle Permits](#)

The duration of the Vehicle TIP is 180-days with NO renewal. It is illegal to sell foreign vehicles in Mexico. The refundable deposit is charged to ensure all foreign vehicles brought into Mexico by visitors are properly removed by those visitors when they leave Mexico. Consult Banjercito agents for more detailed aspects of the Vehicle TIP.

Regarding vessels, all countries regulate foreign marine traffic within their boundaries, whether for commercial or pleasure purposes. Mexico's Customs law for vessel importation is a great effort. It requires boats owners of vessels over 4.5 meters in length (14.7 feet) to secure a TIP for their vessel upon its entry into Mexico; alternatively you can apply 10-60 days before arrival through [Banjercito's online TIP Process](#). The TIP then allows the vessel multiple entries into Mexico and/or allows the owner to leave the vessel in Mexico... for a duration up to 10 years. Currently a one-time fee of **\$1,069.58MXP** per vessel, (or @\$53.65USD) is charged upon completion of the application for this 10-year permit, either online or in person upon first port entry in Mexico. Current aspects of the Vessel TIP include:

- As Mexican Customs Reglamento states (Article 106, Section 5, subsection C) boats can be temporarily imported to Mexico for up to 10 years, provided that owners comply with the application and inspection process, and other requirements and conditions established in this regulation. The permit allows the vessel multiple entries into Mexico over the 10-year period.
- TIP regulation applies to vessels presently located in Mexico and which were brought in on trailers by foreign tourists who were issued temporary import permits for a vehicle and have noted on the back of the permit the characteristics of these vessels, as well as those vessels which have arrived by sea. Owners can import the vessels temporarily under the Customs regulations through a special Banjercito CIITEV office in Mexico. Contact the Aduana (Mexican Customs agency) upon port arrival for directions to this office – or for further instruction if such Banjercito is not located in the immediate area.
- Note it is possible to verify if your boat has an existing TIP issued to you or a previous owner. Follow directives through this [Customs Portal](#) or https://portalsat.plataforma.sat.gob.mx/aduanas_cpitv_internet/index.aspx.
- Permit application for a vessel can be made via [Banjercito's online TIP Process](#) 60 days or less before entering Mexico, apply at least 10 days before leaving your residence to ensure your TIP documents will reach you **by mail** before you leave for Mexico.
- If processed within 91 days prior to the permit's expiration date, a new TIP may be requested for an additional 10 years for the same vessel through [Banjercito's online TIP Process](#) or at any of the CIITEV centers, without the need for the vessel's inspection or the need to submit Exit Papers.

(Banjercito's Online TIP Process at <https://www.banjercito.com.mx/registroVehiculos/#>)

Mexico's Customs regulations include the following instructions for TIP Application:

At boat's first entry point, either boat owner, owner's accredited captain, or owner's accredited representative must present to Customs, the official import application form issued by Customs.

The application must be accompanied by:

- Copies of proof of ownership of the vessel and/or trailer which can be one of the following:
- Title, Bill of Sale, Certificate of Navigation, USGC Certificate of Documentation or current Vessel Registration with a U.S. State's Dept. of Motor Vehicles.
- Current Tourist Visa or Entry Permit, including Passport stamp at time of entry.
- Most recent port exit papers stamped by the Port Captain (if the vessel is already in the country), or papers issued at first port of entry.
- Letter stating that the importer promises to return the vessel to its place of origin at the end of the period granted (this means it cannot be sold) and that the vessel will not be used for commercial purposes without proper authorization.
- In any case where the vessel has been in custody of a marina, a note will be added to the above letter of promise, relieving the marina of its custody of the vessel at of the date of issuance of the permit.

Regulations further suggest that on the original application the boat owner identify, and specify by serial number if possible, any other equipment (radio, motor, integral pumps, rigging, galley appliances, dinghy, jet ski, helicopter, etc.) that should be considered an integral part of the vessel. Keep in mind that if such an item needs to be sent out for repair or replacement, then proof of their identity on this import permit is what will allow the piece to be exported and re-imported more easily and potentially exempt of import duty fees.

IMPORTATION OF MATERIALS AND EQUIPMENT

All materials brought into Mexico must be declared and Customs Duty paid. However, a TIP can be used as needed to import vessel equipment, maintenance and repair parts and allow entry of materials duty-free for each boat when such materials are identified by that vessel's TIP. To temporarily import any merchandise duty-free as destined for the maintenance and repair of a vessel declared as imported, the importer or owner named on the TIP must present the following to Customs at the entry point of such merchandise:

- The vessel's TIP Application Form with documentation/description of vessel equipment.
- Copies of the invoices for any new materials; all purchases to specifically match the boat owner's name.
- It is highly recommended that boat owner includes in the original TIP application a detailed list of all equipment aboard the vessel, specifying brand names, models, and serial numbers where pertinent –
- and to include radios, cameras, appliances, phones and laptops, etc.
- On the form the owner will be notified that he will be responsible for the use of the items listed, as well as for the pieces that were substituted; and, as applicable, he will be responsible for the payment of taxes on these items or the destruction of the old parts if requested by Customs.

Recommendations for this exercise vary among cruisers – especially for establishing record of equipment and gear a cruiser may need to have designated as part of maintenance and repair of vessel temporarily imported. It is a lot easier to complete the application for this permit in person in a port city where there is a Customs Office, Immigration Office, Port Captain, and a Banjército in close proximity – Ensenada and La Paz are the two places to apply for this permit in Baja – and excellent ports of first entry. Note there is no Banjército in Cabo San Lucas. Many cruisers especially recommend Puerto de Pichilingue near La Paz as it is a commercial port with good rapport among mariners and good access while cruising the waters of Baja Sur. The next port that has a Banjército office that can issue this permit is in Mazatlán.

With great attention to cruiser needs, the Harbor Master at Marina de La Paz has been providing answers to many questions regarding the Temporary Import Permit - as well as providing directions for its application in La Paz (although for its extreme convenience, he highly recommend cruisers from San Diego make a stop in Ensenada for all first entry tasks including application of TIP. For his comments on this and more specific La Paz Harbor requirements, please check the marina's website at <http://www.marinadelapaz.com/faqs/> .

CANCELLATION OF YOUR VESSEL'S TIP

Foreign vessels must exit Mexico on or before the expiration of its TIP, otherwise the vessel will be in Mexican territory illegally and may be subject to fines and/or confiscation by Customs Authorities. Cancellation of TIP upon exiting Mexico is possible by surrendering the TIP upon the Port Captain's clearance of vessel. However, the exact process of cancellation is further specified by the type vessel's departure, (i.e. by land, by sea, or as cargo on another vessel) and can only be resolved whenever such departure is determined. Currently cancellations are only done at the Banjercito Modules found at the border where officials may assist you, with both the vehicle and the permit available so that everything may be canceled together – change in this process may be coming; watch for this.

Sportfishing by Boat in US and Mexico

This Guide gives special thanks to the Sport Fishing Association of California (SAC), FONMAR Trust of Baja CA Sur, and Mexico Marina Association (AMMT) for significant help in providing the 2024 Mexican Fishing Regulations: Note that boaters visiting Mexico must comply with documentation requirements on both sides of the border when bringing fish from Mexico into the United States. Please take the time needed to carefully review the following information – plus, visit the links below to keep current with regulation changes prior to your fishing activities. The hyper-links provided in this Guide should automatically update themselves with current information, but it's advisable to verify current date within the info links found in this guide.

In California, Fishing Licenses are required for anglers 16 years and older. The Department of Fish and Wildlife (DFW) is the enforcement agency for protecting California's marine resources. In the link provided here, DFW details all current [California Ocean Sport Fishing Regulations](#), including legal seasons, restricted areas, legal take of species and direct purchase options for valid fishing permits.

Also note that California recently enacted a series of Marine Protected Areas (MPAs). It is important that mariners and especially anglers know their current location as well as relevant regulations and restrictions in these MPAs. For current maps and information regarding how to properly visit a Marine Protected Area in California, please visit this site: [California Marine Protected Areas](#).

In Mexico, Fishing Licenses are required by ALL persons aboard a vessel fishing in Mexican waters regardless of age or interest in fishing. Visitors aboard vessels traveling in Mexican waters are subject to all fishing regulations established by CONAPESCA for the Mexican government. CONAPESCA develops and publishes the Mexican Official Standards for the regulation of all fisheries in Mexico. FONMAR is a trust of the government of Baja California Sur, created to ease the process of obtaining Sport Fishing licenses in Mexico, and provide regulations to supervise fishing that maintains and enriches the wonderful and unique sea life found in these waters. Follow this link [Sportfishing in Mexico](#) to FONMAR's website for information on these important regulations. Also read page 2 of the [2024 AMMT Visitors' Brochure](#) for more info on catch limits and gear regulations, including rules for spearfishing.

PURCHASE ONLINE - Visit Fonmar's website at www.sportfishingbcs.gob.mx for a secure and easy way to obtain your permit to fish in Mexico. All you need to do is enter your name(s), license term and start date and you will be directed to a secure banking site to add your credit card information — once transaction is complete, you'll receive email confirmation with receipt, and a popup link to download and print your permits.

Be aware that having any fishing gear aboard indicates to the inspecting officials that folks aboard intend to fish. Although since 2008, boat permits are no longer required for vessels fishing in Mexican waters, the individual's fishing permit is still required on any private boat engaged in fishing -- with boat being defined as ANY floating platform, to include dinghies, kayaks and paddle boards, etc. Play it safe or you may be seriously delayed and/or cited and fined. Either make sure there is **NO** fishing gear aboard your vessel in Mexican waters OR, if you have the gear, then make sure that everyone onboard is personally licensed to fish in Mexico and prepare for inspection.

Further note that Tuna Pen Aquaculture is the farming of fish by enclosing tuna in man-made pens. These pens are cages that consist of large diameter flotation pipes that hold heavy-duty nets. There are over 60 tuna pens located in northern Baja waters.

It has been discovered that the tuna pens often attract wild tuna, and this appears to be a good opportunity for anglers to take catch tuna! **However**, CONAPESCA reminds all captains, anglers, and vessel owners that Mexico's Sport Fishing Norm (NOM-017-PESC-1994) **prohibits any recreational fishing activities within 250 meters (820 feet) from commercial fishing vessels, and fixed or floating fishing tackle in Mexican waters.** This does include tuna pens. Violations will result in legal action taken against the vessel.

In addition you must have permits for all on board if you want to visit any of Mexico's National Parks that one can visit by boat, including any of the 1400+ protected island areas.

ALSO PURCHASE ONLINE - Visit this link for Mexico's [National Parks Pass](#) for easy online purchase of the **Pasaporte de La Conservación** that provides access to all protected areas it designates, INCLUDING more than 1400 islands and 52 protected reef and other coastal marine environs. For detailed information on Mexico's protected Areas (**Áreas Naturales Protegidas or ANP**), from islands and wetlands to mountains and jungles visit [Discover ANP](#).

Vessel inspections involving sportfishing issues and national park visitation are often conducted by the Mexican Fisheries or Environmental agencies like CONAPESCA, CONANP, and PROFEPA. However the Mexican Navy routinely reinforces the fishing regulations and all government regulations applicable to foreign visitors and their vessels by randomly boarding vessels for inspection in Mexican waters. A copy of the inspection report will be provided to the vessel upon request. **Always welcome inspectors aboard and have YOUR documentation ready for their review.**

Please note further: ANY person fishing in Mexico from shore or pier is NOT required to possess a fishing license.

Besides being fun, catching great-eating fish is terrific in Mexico. Even if you think you will only fish from shore, think ahead and perhaps get fishing licenses for you and crew for the duration of your stay in Mexico – you never know when you might have the great opportunity to hit a wild tuna bite while underway offshore – or best yet, to fish for dinner from your dinghy before sunset in and around your pristine anchorage – pure bliss! Fishing licenses in MX are now issued by the State (i.e. Baja CA Sur) as well as by the Mexican Fisheries (CONAPESCA – Comisión Nacional de Acuacultura y Pesca) and can be easily purchased throughout Baja and the Mainland, including most marinas, plus tourist Kiosks in many shopping malls. [Mexican Sport Fishing License Fees](#) are paid online in \$MXP

Sportfishing licenses are purchased in MX-pesos as printed on each license application. Note: that amount is often subject to change; constant variable with daily currency exchange rate and used to calculate the current MX fees to \$USD listed below. Fees listed below are based on a verified 0.050 exchange rate for \$1USD = \$19.93MXP on Oct 20, 2024. But it's better to just understand that a 1-year MX-sportfishing license has routinely cost @\$50USD for the past 25 years. An annual Mexican License to fish on Oct-2024 costs \$1047MXP (or \$52.51USD).

Baja CA Fishing Licenses in \$USD (Oct 2024): \$14.75/day \$28.89/week \$40.73/month **\$52.51/year** (always a Deal!)
ALSO NOTE: A 1-year license is good for 12-months from purchase date – i.e. it's not issued for the calendar year.

Current Mexican Sport Fishing Regs: <http://fonmar.gob.mx/wp-content/uploads/2022/02/triptico-ingles.pdf>
It's great fishing in Mexican waters, both offshore and in anchorages – get licensed – BUY ONLINE !!

ANNUAL Fee for MX Conservation Passport/National Parks Pass: \$90-100USD/pp (varies with exchange rate)
(On 10/20/2024 Mexico's Annual Conservation Passport cost \$1811.01MXP x 0.050 (or \$90.83USD/per person.)
Visit the phenomenal [CONANP Website](#) and realize the great YEAR'S value of the **Pasaporte de La Conservación!**
Option 2 – Purchase a Day Pass (Conservation Bracelet) per person at most individual ANPs – details on their website.
Best Deal - Secure your Adventure for an entire year with Pasaporte de La Conservación!! BUY ONLINE !!

Mexican-Gov Requirements for Foreign Crew and Boat Traveling in Mexican Waters

Even if traveling by private boat in Mexican waters ONLY – just to enjoy specific water activities like fishing, diving, whale watching, etc. with NO intention of the boat or any crew to make landing at a port or beach in Mexico - there are still requirements for boat and crew that must be observed, with confirmed documentation ready for presentation to authorities at all times. Plan to collect and/or acquire all documentation required and maintain ready for inspection.

Crew Documentation Required:

FMM Electronic Receipt - Each foreign visitor traveling by boat in Mexican waters is required to carry an FMM Entry Permit Receipt, along with a valid Passport Book or Passport Card (at minimum a Passport Card is allowed when the individual makes NO land entry into Mexico); documents must be valid for the duration of travel in Mexican waters. (For more on FMM see page 18).

Notarized Permission Letter - An original, notarized letter signed by both parents that allows permission for children who are minors to be aboard if they are not accompanied by both of their parents.

Vessel Crew List – Documentation of completed spreadsheet as required by INM with information of the vessel and its passengers/crew (read page 4, Step Two on immigration requirements in the [2024 AMMT Visitors' Brochure](#).)

Vessel Documentation Required:

Current Vessel Registry - Every US vessel entering Mexico must carry its ORIGINAL, current copy of vessel registry that proves ownership (i.e. valid USCG Certificate of Documentation or valid State Registration). Foreign flag vessels from Canada, Australia, United Kingdom, British Virgin Islands, Cayman Islands, Republic of Marshall Islands, Japan, etc., are each required to carry a current Certificate of Registry from their Country of Origin.

Authorization Letter of Representation - All vessels registered under a Corporation or LLC, or whenever the legal owner is not on board, are required to have an original notarized-letter onboard authorizing the Master or Representative aboard to operate the vessel.

Proof of Competency - Boat Captain or Master must present proof of competency for recreational boaters. (Examples: Captain's License, State Boating Card or International Certificate for Operators of Pleasure Craft (ICC).)

TIP for Vessel - All vessels larger than 4.5m (15ft) are required to have a valid Temporary Import Permit (TIP) when in Mexico. The ORIGINAL TIP must ALWAYS be on board the vessel. (For more on TIP see page 26).

Insurance - All vessels in Mexican waters are required to show proof of valid Liability Insurance.
CHECK YOUR POLICY to make sure your vessel is covered in the areas you will be cruising and visiting.

General Crew Lists & Mexico Check-in & Clearance Forms

For your boat's use in checking in and out of Mexico and beyond, Downwind Marine maintains a blank "Despacho" or Crew List form printed in Spanish. It is a basic list to present to port authorities that identifies your vessel's crew in total number and by name, age, nationality and general position that each serves aboard (Captain, Crew, Navigator, etc.). While current procedure in Mexico no longer requires a Despacho be updated in and out of ports within Mexico, many port captains may still ask to inspect a vessel's Despacho for accuracy upon arrival in their region. Despachos still require accurate updating with report to the port authorities anytime your boat's crew changes, and they are still needed for approved clearance from Mexico in international departures. Without approved clearance documented in official paperwork when departing from Mexico, boats can be refused entry in their next foreign port-of-call. Simply use our Guide's **Appendix I** to make several copies of the form to retrieve when needed and complete by hand with updated information whenever the crew list needs updating... or download a blank form of **Appendix I** from the online version of this Cruising Downwind Guide (<https://sandiegomarine.com/cruising-guide/>) and then locate Appendix I to copy as a Blank Despacho/Crew List to maintain on your computer.)

Note that Kathy Parsons also offers an excellent online pdf for this use as well – **it is one you can fill out and save via your computer on board to print whenever you have need.** This bilingual form is written with comprehensive directions in both Spanish and English. Kathy developed this form for cruisers with Rogelio Gregg at Baja Naval in Ensenada, to be easy to use and to address all the concerns of the Mexican port officials – it's too good not to use!! Gratefully we have their permission to reference here for cruisers to download from this link:

<http://www.spanishforcruisers.com/sfc-cheatsheet-crewlist.htm> (Saludos a Kathy y Rogelio!)

In addition, use the above link to download all three forms needed in Mexico upon arrival & clearance of the country.

Arriba (Mexican Arrival Crew List), **Aviso** (Notification Form) y **Zarpo** (Exit/Clearance from Mexico Form).

Check out the link above and Kathy's website at www.SpanishforCruisers.com for MANY other amazing cruiser links and resources too; plus supplementary information provided in Kathy's: user-friendly guides:

Spanish and French for Cruisers – Language Guides for Boaters at: <http://www.forcruisers.com/>

Clearing into and Out of Ports within Mexico & Cabotage

In navigating from one Mexican port to another, the skipper at minimum should inform the Harbor Master or marina office of your arrival or departure by means of an "Aviso" (Notification). This notification might be specified differently, depending on the preference of the Harbor Master or marina office, as some may require a written notification, while others allow a verbal Aviso via VHF, channel 16. Check with the Capitaña (Port Captain) on any special requirements of his Port. In some ports you must pay a Port Use Fee when arriving and anchoring (if you anchor out). These fees are paid to the API. (Port Authority)

To check out of the country, Mexico requires a last visit to the Port Captain's office in your last port. There is a port use fee paid by cash, check or credit card at the Port Authority Office (API), usually based on the size of your boat. This fee is not always enforced in all ports but is supposed to be collected when you leave any Mexican port for an international destination. Usually the Port Captain will require proof of payment of API fees in order to stamp your clearance papers and Despacho. Follow the "Reglas" provided by Mexico's Migración, Aduana and other port officials you visit in this beautiful country and your stay will be an incredible experience. The FMM and the Temporary Import Permit are simple measures of commerce and friendship provided by the Mexican government to officially establish your stay in Mexico as foreign visitors and provide for fair economy in maintaining your boat and cruising needs. The modest Duty Fees you will be charged provide for services that ensure your safety and property protection during your stay – Mexico values its visitors.

Controlled Substances in Mexico

With or without prescription, if it's a "controlled narcotic" in the States, then it's also controlled in Mexico and subject to law! Play it safe here too – in order to legally possess such drugs keep them in their original Rx-containers with your name on the container and carry a Mexican Rx for them from a local Physician. Note that only certain licensed physicians in Mexico can issue the Rx for controlled drugs and these must be kept for inspection.

If your health requires any of the drugs listed below, consider contacting a Mexican doctor to provide the prescription.

A SHORT LISTING BY COMMON GENERIC NAME (not all inclusive)

KETAMINE	ZOLPIDEM	HYDROCODONE / OXYCODONE
MORPHINE SULFATE	TRIAZOLAM	CODEIN
PHENTANILE SULFATE	OXYCODONE	ALPROZOLAM
METHADONE	BROMAZEPAM	PHENOBARBITAL
CLOBEENZOREX (SEMI-CONTROLLED)	MIDAZOLAM	LORAZEPAM
PHEENTERMINE (SEMI-CONTROLLED)	DIAZEPAM	CLONAZEPAM
NALBUFINA	DENTROPROXIPHENE (AKA: NEOPERCODAN)	

Appendix I – ~~Despacho~~ (Crew List)

ESTADOS UNIDOS MEXICANOS
SECRETARIA DE AL MARINA NACIONAL
DIRECCION DE MARINA MERCANTE
ROL DE TRIPULANTES

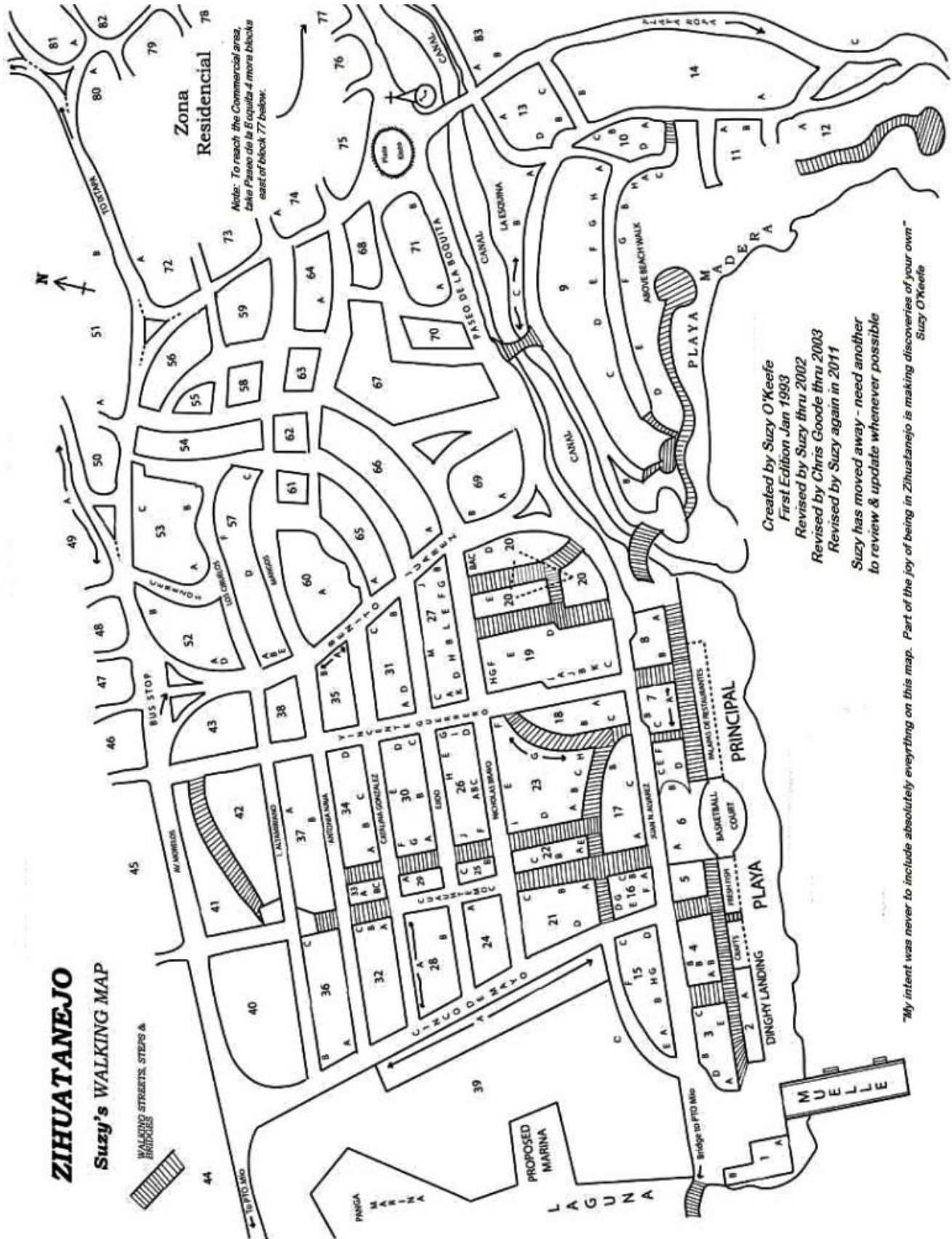
PUERTO DE _____ NUMERAL _____
Rolde los personas con que navegal el _____
matricula de _____ del porte de _____ toneladas
brutas de arqueo, al mando de su Capitan, _____
que zarpa para el puerto de _____

NOMBRE	NACIONALIDAD	TITULO	EDAD
--------	--------------	--------	------

Comprende este Rol los asientos de _____ individuos, y siendo de mi satisfaccion como Capitan que soy, me obligo al exacto cumplimiento de cuanto disponen las leyes y reglamentos del legitimo comercio nacional y de mas disposiciones vigentes que me sean provenientes por las Autoridades Maritimas de los puertos nacionales.

_____ la fecha _____ por el Capitan

Suzy O’Keefe’s set of Walking Maps & Indexes are also included mainly for historical reference – All last updated in 2011 for our Guide by the original creator. For more accurate viewing of this area, use this [Google Map Link to Zihuatanejo](#)



Created by Suzy O'Keefe
First Edition Jan 1993
Revised by Suzy thru 2002
Revised by Chris Goode thru 2003
Revised by Suzy again in 2011
Suzy has moved away – need another
to review & update whenever possible

My intent was never to include absolutely everything on this map. Part of the joy of being in Zihuatanejo is making discoveries of your own
Suzy O'Keefe

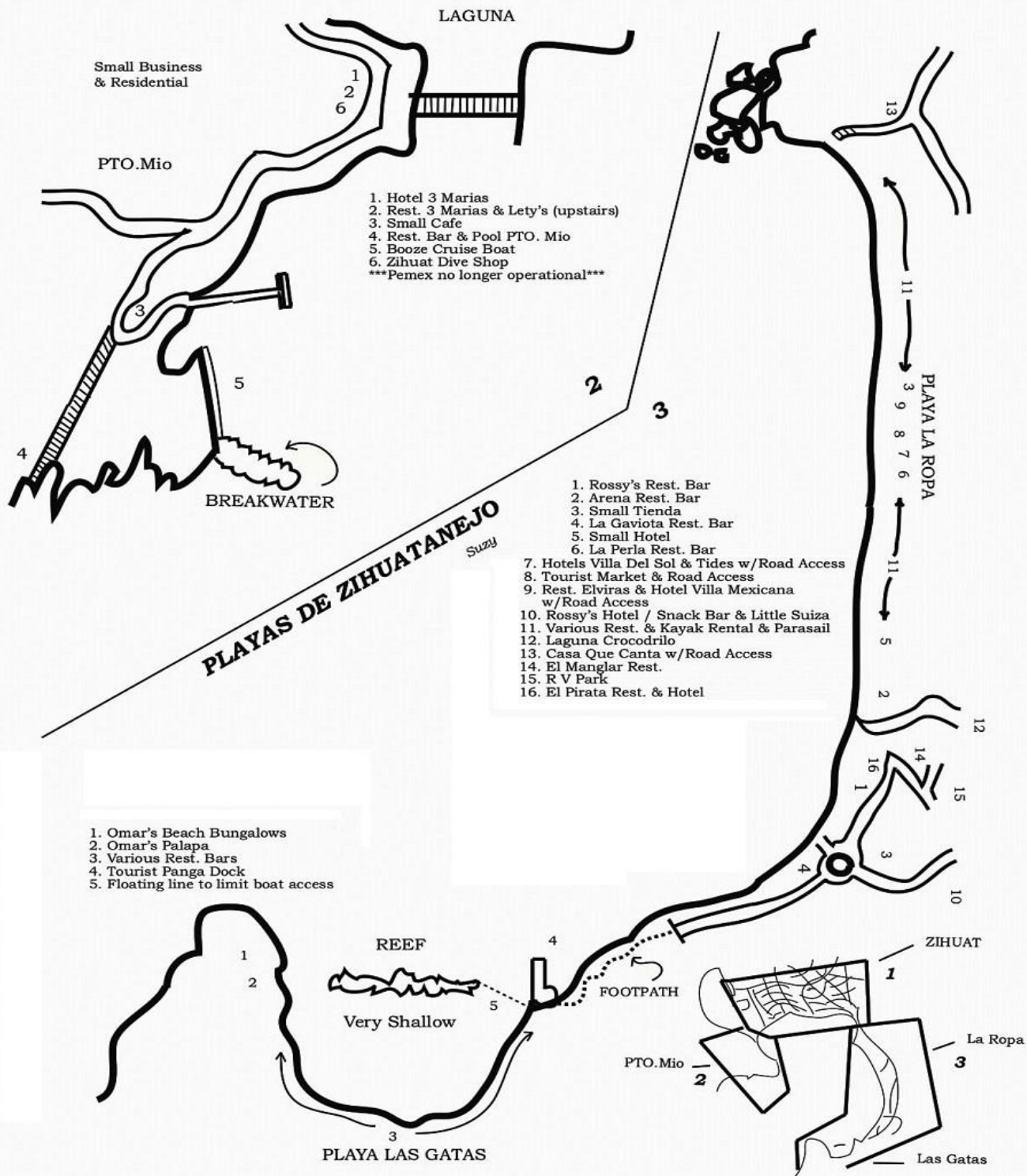
Capitañia del Puerto	1- A	Liquor Adriana y Pancho	17- A	Lavanderias (various)	29- A
SCT	1- A	Pizza Ole	17- B	Farmacia	30- A
Ismael y Hilda Servicios	1- B	Ice Cream & Gelato	17- C	30- B
Navy Post	2- A	Panaderia El Buen Gusto	18- A	30- C
Small Tienda	3- A	Coconuts Restaurant	18- B	30- D
Small Tienda	3- B	Fajitas Queen	18- C	30- E
Art Nativo Gallery	3- C	Leather Marios	19- A	Lavanderia	30- F
Public Bathrooms	3- D	Pizza Loco	19- B	Any's Tamales	31- A
Sirena Gorda Restaurant	3- E	Hotel Susy	19- C	Pollo Rostizados	31- B
Fortinos Restaurant	4- A	Papelera	19- D	Bus Stop (local)	31- C
Elviras Restaurant	4- B	Hotel (former hospital)	19- E	Los Braceros	31- D
Artisans & Café Marina	5	19- F	32- A
Gazebo	6- A	Farmacia	19- G	32- B
Crocodrilo Sculptures	6- B	Ice Cream & Gelato	19- H	32- C
Policia Touristica	6- C	Wireless Internet	19- I	32- C
Public Bathrooms	6- D	Propane Fittings	19- J	Chinese Food	33- A
Crafts	6- E	Costacel & Telcel	19- K	Foto/Film/Cameras	33- B
Small Tienda	6- F	Wireless Internet	20- A	33- C
Beachfront Restaurants	7- A	Restaurant Viva Mexico	20- B	34- A
Small Tienda	7- B	Liquor	20- C	Shoe Repair	34- B
Public Parking	7- C	Sam's Club (order only)	20- D	Shoe Repair	34- C
Museum	8- A	Various Restaurants	20- E	Costacel & Telcel	34- D
Restaurant Arcadia	8- B	Farmacia	21- A	Various Shops	35- A
Rufo's / Cooking School	ESQ -A	21- B	Waldo's Dollar Store	35- B
Ita Cafeteria	ESQ -B	Cinema	21- C	Yamaha Repair & Parts	36- A
Asst. Restaurants /Crafts	ESQ -C	Artisansa Nopal	21- D	Florist	36- B
Rental Casa	9- A	Taxco Silver	22- A	Biblioteca	36- C
Restaurant Nardo	9- B	Liquor	22- B	37- A
Casa Azul	9- C	Taxco Silver	22- C	Ground Coffee	37- B
Casa de la Abuelita	9- D	22- D	Telas Parisina (Fabrics)	38- A
Casa Amarilla	9- E	Zorro Sports Bar	22- E	Various Other Shops	38- A
Posada Arca de Noe	9- F	Fondo Tertulia Restaurant	23- A	Various Artisan Stalls	39- A
Bungalows la Madera	9- G	Barracude Bar	23- B	39- B
Bungalows Camila	9- H	El Murmullo Restaurant	23- C	Navy Base	39- C
Arena Suites/ Ley	ABW-A	Casa De Cambio	23- D	40- A
Bungalows Sotelo	ABW -B	Veterinaria/Pet Store	23- E	Video Rental	46- A
Brisas Del Mar	ABW -C	Fishing Hole Bar	23- F	Various Taco Stands	47- A
Casa Adriana	ABW -D	Hotel Zihuat	23- G	Various Shops	48- A
Casa Madera	ABW -E	Toro Way Restaurant	23- H	Various Shops	49- A
Pariso Suites	ABW -F	Bar Revolucion de 1910	23- I	Post Office	51- A
Bahia Suites	ABW -G	Porelain & Glass Crafts	24- A	Immigración	51- B
Bungalows Allec	ABW -H	Nuevo Zelandia	25- A	Isstemas	52- A
.....	10- A	25- B	12V Adaptors	52- B
Bungalows Adelmar	10- B	Zihua Pancake House	25- C	Park & Vendors	52- C
Wireless Internet	10- C	Hotel Nando	25- D	Fabric & Craft Store	52- D
Tienda Miscelena	10- D	Swimsuits & Surf Gear	26- A	53- A
Palacio	11- A	Swimsuits & Surf Gear	26- B	Lab Ixtapa/Zihuat	53- B
Casa de Sun & Moon	11- B	Swimsuits & Surf Gear	26- C	El Pueblito Restaurant	53- C
Hotel Irma	12- A	Il Paccolo	26- D	57- A
OLD La Ceiba Tennis	13- A	Liquor	26- E	57- B
Hotel Noemi	13- B	Hotel Ada	26- F	57- C
Restaurant La Casa Vieja	13- C	Didi Cocina Economica	26- G	Various Mercados	57- D
Villas Mercedes	13- D	Los Oaxacos	26- H	Santander Bank	57- E
Las Villas Mirimar	14- A	Onyx Lamps	26- I	Emergency Clinic	57- F
NEW La Ceiba Hotel	14- B	Lavanderia Self-Serve	27- A	MERCADO	60- A
Noemi's Restaurant	15- A	Susy's Fondo Economica	27- B	Merza (wine by the case)	64- A
Garrobos Restaurant	15- B	Banamex	27- C	Ferreteria	65- A
.....	15- C	Nautico	27- D	Banco Serafin	66- A
Marine Hardware/Oil	15- D	Wireless Internet	27- E	Papelera	69- A
Fishing Tackle	15- E	Carwash	27- F	Scotia Bank	69- B
Hotel Ulyses	15- F	Bananas	27- G	La Boquita	71- A
3 Marias Hotel	15- G	Liquor	27- H	OXO Store	71- B
Aero Mexico	15- H	Tortas Ziranda	27- I	DHL	72- A
Ice Cream & Gelato	16- A	Banorte	27- J	IAMAT Doctor	74- A
Wireless Internet	16- B	Mi Chayito	27- K	Tortillas	80- A
Rafa's (formerly Ricks)	16- C	Farmacia	27- L	Cruz Roja (Red Cross)	80- A
Church	16- D	Tacostenomichocana	27- M	Lavanderia	83- A
Lacquer de Olinala	16- E	Bancomer	27- N	Various Tiendas	83- B
Fishing Tackle (upstairs)	16- F	Lavanderias (various)	28- A	Tango Tapas Bar	83- C
Restaurant 3 Marias	16- G	Galeria Lupita	28- B		

LEGEND for ZIHUATANEJO WALKING MAP & Sorted by Category

Revised Feb 2011 by Suzy

<u>Check-In & Military</u>		<u>Public Services</u>		<u>Bakeries & Tortillas</u>	
Capitaña del Puerto	1- A	Public Bathrooms	3- D	Panaderia El Buen Gusto	18- A
SCT	1- A	Public Bathrooms	6- D	Tortillas	80- A
Ismael y Hilda Servicios	1- B	Policia Touristica	6- C	<u>Artisans & Crafts</u>	
Navy Post	2- A	Public Parking	7- C	Art Nativo Gallery	3- C
Immigración	51- B	Bus Stop (local)	31- C	Artisans & Café Marina	5
Navy Base	39- C	Post Office	51- A	Crafts	6- E
<u>Banks & Cambio</u>		<u>Specialty Shops</u>		Museum	8- A
Scotia Bank	69- B	Gazebo	6- A	Asst. Restaurants & Crafts	ESQ-C
Banco Serafin	66- A	Crocodrilo Sculptures	6- B	Taxco Silver	22- C
Santander Bank	57- E	Museum	8- A	Taxco Silver	22- A
Banorte	27- J	Taxco Silver	22- C	Artisansa Nopal	21- D
Banamex	27- C	Liquor	22- B	Leather Marios	19- A
Bancomer	27- N	Taxco Silver	22- A	Lacquer de Olinala	16- E
Casa De Cambio	23- D	Cinema	21- C	Porelain & Glass Crafts	24- A
<u>Restaurants & Bars</u>		Sam's Club (order only)	20- D	Onyx Lamps	26- I
Sirena Gorda Restaurant	3- E	Liquor	20- C	Galeria Lupita	28- B
Fortinos Restaurant	4- A	Costacel & Telcel	19- K	Park & Vendors	52- C
Elviras Restaurant	4- B	Propane Fittings	19- J	Various Artisan Stalls	39- A
Artisans & Café Marina	5	Ice Cream & Gelato	19- H	<u>Hotels</u>	
Beachfront Restaurants	7- A	Papelaria	19- D	Casa Azul	9- C
Restaurant Arcadia	8- B	Ice Cream & Gelato	17- C	Casa de la Abuelita	9- D
Rufo's / Cooking School	ESQ-A	Liquor Adriana y Pancho	17- A	Casa Amarilla	9- E
Ita Cafeteria	ESQ-B	Fishing Tackle (upstairs)	16- F	Posada Arca de Noe	9- F
Asst. Restaurants /Crafts	ESQ-C	Church	16- D	Bungalows la Madera	9- G
Restaurant Nardo	9- B	Ice Cream & Gelato	16- A	Bungalows Camila	9-H
Restaurant La Casa Vieja	13- C	Aero Mexico	15- H	Arena Suites/ Ley	ABW-A
Noemi's Restaurant	15- A	Fishing Tackle	15- E	Bungalows Sotelo	ABW -B
Garrobos Restaurant	15- B	Marine Hardware/Oil	15- D	Brisas Del Mar	ABW -C
Rafa's (formerly Ricks)	16- C	Veterinaria/Pet Store	23- E	Casa Adriana	ABW -D
Restaurant 3 Marias	16- G	Swimsuits & Surf Gear	26- A	Casa Madera	ABW -E
Pizza Ole	17- B	Swimsuits & Surf Gear	26- B	Pariso Suites	ABW -F
Coconuts Restaurant	18- B	Swimsuits & Surf Gear	26- C	Bahia Suites	ABW -G
Fajitas Queen	18- C	Liquor	26- E	Bungalows Allec	ABW -H
Pizza Loco	19- B	Nautico	27- D	Bungalows Adelmar	10- B
Restaurant Viva Mexico	20- B	Carwash	27- F	Palacio	11- A
Various Restaurants	20- E	Liquor	27- H	Casa de Sun & Moon	11- B
Zorro Sports Bar	22- E	Lavanderias (various)	28- A	Hotel Irma	12- A
Fondo Tertulia Restaurant	23- A	Lavanderias (various)	29- A	OLD La Ceiba Tennis	13- A
Barracude Bar	23- B	Lavanderia	30- F	Hotel Noemi	13- B
El Murmullo Restaurant	23- C	Foto/Film/Cameras	33- B	Hotel Susy	19- C
Fishing Hole Bar	23- F	Lavanderia	83- A	3 Marias Hotel	15- G
Toro Way Restaurant	23- H	DHL	72- A	Hotel Ulyses	15- F
Bar Revolucion de 1910	23- I	Papelaria	69- A	Villas Mercedes	13- D
Nuevo Zelandia	25- A	Ferreteria	65- A	Las Villas Mirimar	14- A
Zihua Pancake House	25- C	Fabric & Craft Store	52- D	NEW La Ceiba Hotel	14- B
Il Paccolo	26- D	12V Adaptors	52- B	Hotel Zihuat	23- G
Didi Cocina Economica	26- G	Various Shops	48- A	Hotel Nando	25- D
Los Oaxacos	26- H	Various Shops	49- A	Hotel Ada	26- F
Susy's Fondo Economica	27- B	Video Rental	46- A	<u>Mercados, Markets & Tiendas</u>	
Bananas	27- G	Telas Parisina (Fabrics)	38- A	Small Tienda	3- A
Tortas Ziranda	27- I	Various Shops	38- A	Small Tienda	3- B
Mi Chayito	27- K	Ground Coffee	37- B	Small Tienda	6- F
Tacostenomichocana	27- M	Florist	36- B	Small Tienda	7- B
Any's Tamales	31- A	Yamaha Repair & Parts	36- A	Tienda Miscelena	10- D
Pollo Rostisados	31- B	Waldo's Dollar Store	35- B	Merza (wine by the case)	64- A
Los Braceros	31- D	Various Shops	35- A	MERCADO	60- A
Chinese Food	33- A	Costacel & Telcel	34- D	Isstemas	52- A
Various Taco Stands	47- A	Shoe Repair	34- B	Various Tiendas	83- B
El Pueblito Restaurant	53- C	Shoe Repair	34- C	COMMERCIAL (off map - see map note)	
La Boquita	71- A	<u>Medical</u>		<u>Arts & Education</u>	
Tango Tapas Bar	83- C	Farmacia	19- G	Gazebo	6- A
<u>Internet</u>		Farmacia	21- A	Crocodrilo Sculptures	6- B
Wireless Internet	20- A	Farmacia	27- L	Museum	8- A
Wireless Internet	19- I	Farmacia	30- A	Park & Vendors	52- C
Wireless Internet	16- B	Lab Ixtapa/Zihuat	53- B	Biblioteca	36- C
Wireless Internet	10- C	Emergency Clinic	57- F		
Wireless Internet	27- E	IAMAT Doctor	74- A		

Appendix III – PLAYAS DE ZIHUATANEJO



Created by Suzy O'Keefe 1993, Revised 2011

Appendix IV

Downwind WebLinks Index Pg. I – Also find at <https://sandiegomarine.com/faq/sailing-resources/>

Port of San Diego:

Port of San Diego - General Bay Information	https://www.portofsandiego.org/maritime/mariner-resources/general-bay-information
Port of San Diego - General Boater Info	https://www.portofsandiego.org/coming-and-going/boating-san-diego-bay
Port of San Diego - Visitor Reservations for Docks & Anchorage	http://reservations.portofsandiego.org/boating/
Port of San Diego Map – (Google Map)	https://www.google.com/maps/place/Port+of+San+Diego/
San Diego Bay Resources & Local Knowledge	http://www.sdwaterfront.com

Cruising Baja & West Coast of Mexico:

Baja HaHa First Timer's Guide to Mexico	https://www.baja-haha.com/Guide_Assets/MexFTG-2024.pdf
Baja History & References - Wikipedia	https://en.wikipedia.org/wiki/Baja_California_peninsula
Baja History & Images - Harry Crosby	https://library.ucsd.edu/speccoll/baja/crosby/crosby01.html
Cruising Baja - Club Cruceros de La Paz	http://www.clubcruceros.net
Cruising Baja - Roads Less Traveled: (Ex-Pat) Tips for Mexico	https://roadslesstraveled.us/mexico-cruising-guide-sailing-ex-pat-lifestyle-tips-1/
Comprehensive Port Administration of Baja CA Sur, SA de CV	https://apibcs.com.mx/
Directory of Port Captains in Mexico	https://www.gob.mx/semar%7Cunicapam/documentos/directorio-de-las-capitanias-de-puerto
2024 AMMT Brochure - Visiting Mexico by Private Boat	https://ammtac.com/wp-content/uploads/2024/06/BoatingGuide-2024.pdf
Programa Viajero Confiable - Mexico's Trusted Traveler Program	https://www.gob.mx/tramites/ficha/membresia-del-programa-viajero-confiable/INM772
Sea Turtle Spotting – iNaturalist.org and Upwell.org	http://www.clubcruceros.net/CruisingBaja/SeaTurtles.html
Annual MX Conservation Passport	https://pasaportedelaconservacion.conanp.gob.mx/vistas/inicio.php

Online Boater Resources:

Cruising - Seabreeze Nautical Books & Charts	https://www.seabreezenauticalbooks.com
Cruising - Pat Rain's Mexico Boating Blog	https://www.mexicoboating.com/blog/
Cruising - Noonsite: Global Site for Cruising Sailors	http://www.noonsite.com/
Cruising - Randy Fraser's Online Guide (Virgin Islands & Vicinity)	http://www.onlinecruisingguide.com
Cruising Journal of Jacaranda	https://www.jacarandajourney.com
Cruising Pharmacy - Seaside Marine International Drug Co.	https://seasidemarinedrugs.com/services
Fishing - California Sportfishing Association (SAC)	https://www.californiasportfishing.org
Fishing - Mexican Sportfishing – Licensing and Regs	http://fonmar.gob.mx/lineamientos/
Fishing - Mexican Sportfishing – Purchase License Online	https://www.sportfishingbcs.gob.mx/
Global Online Marine Traffic - Ship Tracking	https://www.marinetraffic.com/
John's Nautical Links List - Mother of ALL Maritime Links	http://www.boat-links.com/boatlink.html
Maritime Institute - Advanced Mariner's Training	https://maritimeinstitute.com/
Maritime Museum of San Diego	https://sdmaritime.org/
Maritime Safety Information & Nautical Publications	https://msi.nga.mil/

Online Travel Info & Events for Mexico & Baja:

Alerts - Canadian Travel Advisory for México	https://travel.gc.ca/destinations/mexico
Alerts - U.S. Health Dept. Medical Advisory: CDC 24/7	https://wwwnc.cdc.gov/travel
Alerts - U.S. State Dept. Travel Advisory for México	https://travel.state.gov/content/travel/en/traveladvisories/traveladvisories/mexico-travel-advisory.html
Sectur – México's Ministry of Tourism	https://www.gob.mx/sectur/
BajaDock - Ensenada Info Links	https://bajadock.wordpress.com/baja-information-links/
Discover ANP - The Protected Areas of Mexico	https://descubreanp.conanp.gob.mx/
Discover Baja - Official Mx Travel Guide of Baja CA	https://bajacalifornia.travel/
La Paz Cruising Guide – Club Cruceros	https://www.clubcruceros.net/Cruiser_Guide.pdf
Méxperience	https://www.mexperience.com/
La Paz-Gateway to the Sea of Cortéz	https://www.golapaz.com/

Downwind WebLinks Index Pg. 2

Online Travel Info & Events Cont.

[Sonora Only Vehicle Permit](#)
[U.S. State Dept. Travel Information](#)

<https://www.bajabound.com/before/permits/sonoraonly>
<https://travel.state.gov/content/travel/en/international-travel.html>

Marine Communications - Info Links:

[Dockside Radio - Cruising Nets](#)

<https://docksideradio.com/CruisingNets.html>

[FCC - Ship Radio Stations & Licensing](#)

<https://www.fcc.gov/wireless/bureau-divisions/mobility-division/maritime-mobile/ship-radio-stations>

[FCC - Global Maritime Distress and Safety System](#)

<https://www.fcc.gov/wireless/bureau-divisions/mobility-division/maritime-mobile/ship-radio-stations/global-maritime>

[U.S. Coast Guard - Digital Selective Calling](#)

<https://www.navcen.uscg.gov/digital-selective-calling>

[U.S. Coast Guard - Navigation Center](#)

<https://www.navcen.uscg.gov/>

Marine Electronics Training & Supply:

[Comprehensive Marine Radio and Radar Training Books](#)

<https://www.made-simplefor-cruisers.com/>

[Custom Marine Electronics](#)

<https://www.cmesandiego.com/>

[Dockside Radio](#)

<http://www.docksideradio.com>

[Gordon West Radio School](#)

<http://www.gordonwestradioschool.com>

[Ham Radio Outlet](#)

<https://www.hamradio.com>

[Offshore Outfitters](#)

<http://offshoreoutfitters.com/>

[SailMail - Universal email for Cruisers - All Devices, All Oceans](#)

<https://sailmail.com>

[WinLink - Global Radio Email](#)

<https://winlink.org>

Miscellaneous Info for Border Crossing:

[San Ysidro-Tijuana Border Traffic Cam](#)

<https://www.bordertraffic.com/California-Baja/San-Ysidro-Tijuana.aspx>

[Mexican TIP Registration Search](#)

https://portalsat.plataforma.sat.gob.mx/aduanas_cpitv_internet/index.aspx

[Mexican TIP Online Application and Processing](#)

<https://www.banjercito.com.mx/registroVehiculos/>

[Mexican Customs Import Regulations](#)

<https://www.discoverbaja.com/go/crossing-border-mexico/#customs>

National Weather Service - Graphical:

[National Weather Service Digital Forecast](#)

<https://digital.weather.gov/>

[National Weather Service Graphical Forecast](#)

<https://graphical.weather.gov/>

NWS & Marine Weather Links:

[Crown Weather Plus – Subscription Link](#)

<tps://crownweather.com/cws-plus/>

[Earth's Global Map of Wind](#)

<tps://earth.nullschool.net>

[EEBMIKE: Weather of West Coast Mexico & Storm Track](#)

<tp://eebmike.com/>

[NOAA Satellite and Info Service - Tropical Weather](#)

<tps://www.ospo.noaa.gov/products/ocean/tropical/>

[NOAA Satellite Imagery Products](#)

<tps://www.ospo.noaa.gov/Products/imagery/index.html>

[NOAA Weather Radio Live Streams](#)

<tps://www.weatherusa.net/radio>

[NOAA CO-OPS Tides and Currents](#)

<tps://tidesandcurrents.noaa.gov/products.html>

[NWS National Hurricane Center](#)

<tps://www.nhc.noaa.gov/index.shtml>

[NWS Ocean Prediction Center](#)

<tps://ocean.weather.gov/>

[Passage Weather for Sailors & Adventurers](#)

<tps://www.passageweather.com>

[WINDY-TY Weather Page](#)

<tps://www.windy.com>

Sailing & Cruising Associations:

[Ancient Mariners Sailing Association](#)

<http://www.amss.us>

[Blue Water Cruising Association](#)

<https://www.bluewatercruising.org>

Downwind WebLinks Index Pg. 3 Sailing & Cruising Associations Cont.

[Seven Seas Cruising Association](#)

[The Inter-Collegiate Sailing Association \(ICSA\)](#)

[The Interscholastic Sailing Association \(ISSA\)](#)

[The Pacific Coast Interscholastic Sailing Association \(PCISA\)](#)

[U.S. Sailing](#)

[World Cruising Club](#)

[World Sailing](#)

<https://www.scca.org/#/home/>

<https://collegesailing.org>

<https://hssailing.org>

<https://pcisa.hssailing.org>

<https://www.facebook.com/@USSAILING/>

<https://www.worldcruising.com/>

<https://www.sailing.org/>

Journals & Periodicals:

[48° North](#)

[Baja Times for Baja CA Norte](#)

[Baja Insider](#)

[Blue Water Sailing](#)

[Cruising Compass](#)

[Cruising World](#)

[Currents](#)

[Gringo Gazette - Baja News](#)

[Latitude 38](#)

[Ocean Navigator](#)

[Sailing World](#)

[San Diego Reader](#)

[Scuttlebutt Sailing News](#)

[SEA Magazine](#)

[The Log \(California's Boating and Fishing News\)](#)

<https://48north.com>

<http://www.bajatimes.com.mx>

<http://www.bajainsider.com>

<http://www.bwsailing.com/bw/>

<https://www.bwsailing.com/cc/>

<https://www.cruisingworld.com>

<https://currents.bluewatercruising.org>

<https://www.gringogazette.com>

<https://www.latitude38.com>

<http://www.oceannavigator.com>

<https://www.sailingworld.com>

<https://www.sandiegoreader.com>

<https://www.sailingscuttlebutt.com>

<http://www.seamagazine.com>

<https://www.thelog.com>

Regattas, Races, Rallies & Gatherings:

[America's Cup](#)

[Baha Ha-Ha](#)

[Cascadia Cruising Rally](#)

[Coho HoHo](#)

[CUBAR Odyssey](#)

[El Salvador Rally](#)

[Pacific Puddle Jump](#)

[Panama Posse/Ocean Posse](#)

[Race to Alaska](#)

[Volvo Ocean Race/The Ocean Race](#)

[World Cruising Events](#)

[Wooden Boats - Port Townsend](#)

[Wooden Boats – San Diego](#)

<https://www.americascup.com/>

<http://www.baja-haha.com/>

<https://48north.com/cruising-rally/>

<https://cohooho.com/>

<http://cubar.sdyc.org/>

<http://elsalvadorrally.com/>

<http://www.pacificpuddlejump.com/>

<https://oceanposse.com/>

<https://r2ak.com/>

<https://www.theoceanrace.com/en/home.html>

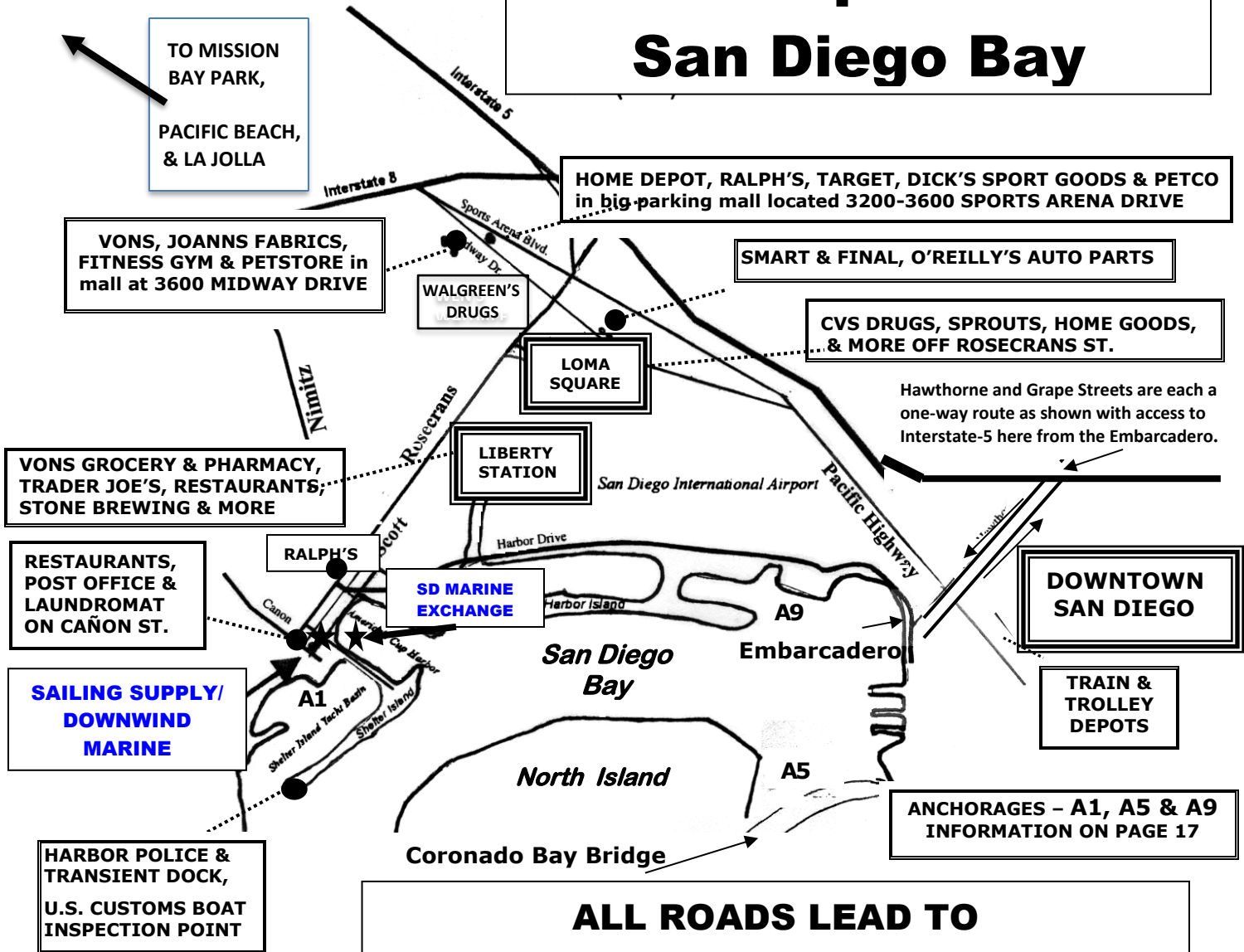
<https://www.worldcruising.com/>

<https://woodenboat.org/>

<https://www.koehlerkraft.com/woodenboatfestival>

DOWNWIND CRUISIN' NOTES

Cruisers' Service Map for San Diego Bay



ALL ROADS LEAD TO SAILING SUPPLY / DOWNWIND MARINE

2804 Cañon Street

Near Shelter Island in San Diego

Phone: (619) 225-9411

Fax: (619) 225-9414

www.sandiegomarine.com

Email: cruiserinfo@downwindmarine.com